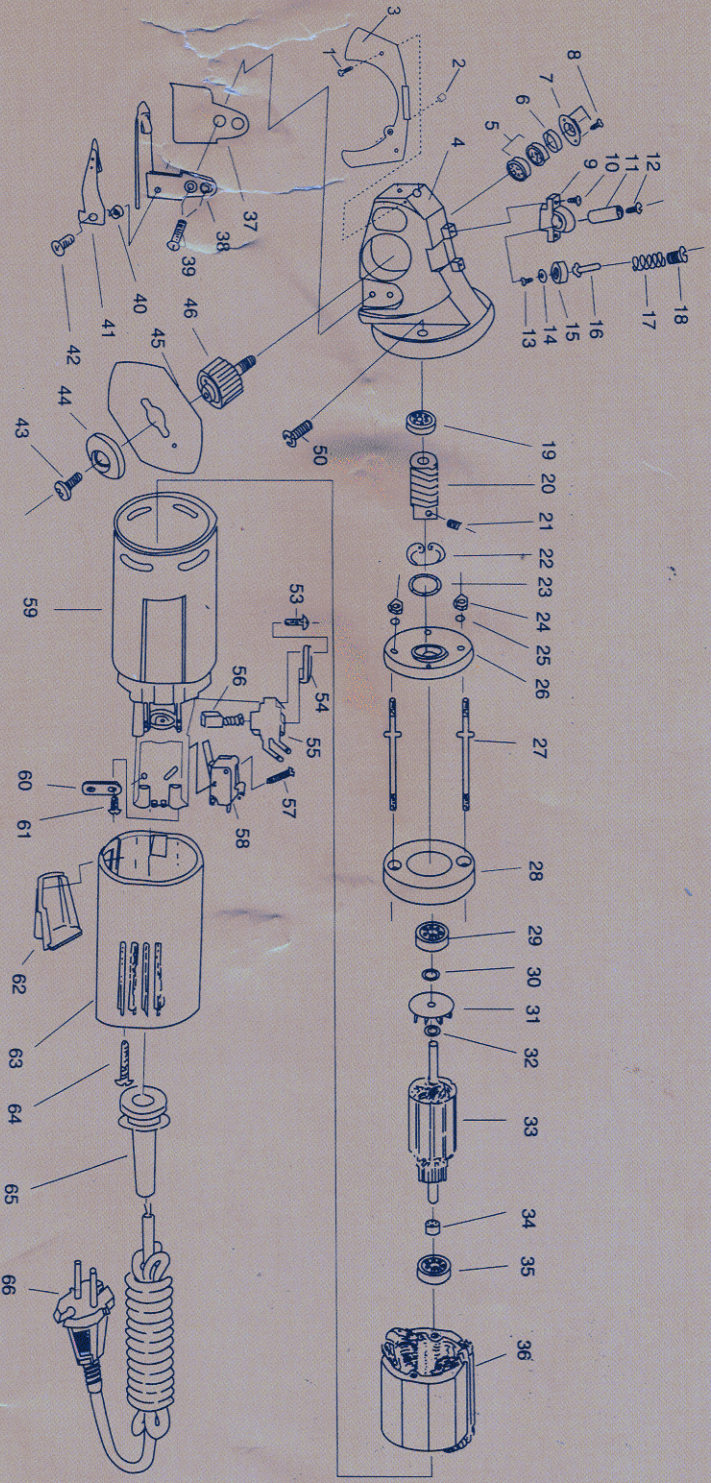


Three dimensional assembly picture



Directions For use

1. Usage: It's used for medium or small enterprises of garments, shoes & hats, umbrella-making, etc.
2. Features: Quick cutting speed, light & handy, agile. The automatic knife grinder makes knife edge sharp at any time.
3. Main technical specifications
 - Size of blade: ϕ 65 mm
 - Cutting height: 22 mm
 - Voltage one-phase: 220V/110V
 - Power: 150W
 - Class of insulation: E
 - Net weight: about 1.2Kilo.
4. Directions for use:
 1. Knife grinder: Knife edge will become blunt after used. Press the grinder button lightly and grindstone will make the edge shaper and keep it sharp
 2. Loading & unloading blade:

First aim the blade hole at the recess of the machine, then insert acylindricalpin to make the blade not turn. Circle forward or backward the screw to load or unload blades.
 3. Springy cutting: Cutting is finished near the blade with proper spring. The angle mustn't be too large.
 4. Changing electric brush: After a long -time running, electric brush will be grinded away. There will be sparkle from the machine, low -running speed, lack of power! Another electric brush must be supplied.
5. Maintenance:
 1. Grindstone: Clean or change the oily grindstone to keep it effective.
 2. Removing fine dust: Remove the too much fine dust off the head or inside of the machine.
 3. Lubricating worm gear: Fill oil into worm gear once every 15 days if the working capacity is high.
 4. Blade lubricator: Fill 30#of motor oil, twice per day to decrease the damage of blade.