

GLOBAL

WF 1335

Walking foot machine

**Instruction manual
& parts book**

**Always switch off the electricity when working on
the machine.**

Thank you very much for buying our company's sewing machine. Before using your new machine. Please read the safety instructions below and the explanations given in the instruction manual.

With industrial sewing machines, it is normal to carry out work while positioned directly in front of moving parts such as the needle and thread take-up lever, and consequently there is always a danger of injury that can be caused by these parts. Follow the instructions from training personnel and instructors regarding safe and correct operation before operating the machine so that you will know how to use it correctly.

SAFETY INSTRUCTIONS

1. Safety indications and their meanings

This instruction manual and the indications and symbols that are used on the machine itself are provided in order to ensure safe operation of this machine and to prevent accidents and injury to yourself or other people. The meanings of these indications and symbols are given below.

Indications



CAUTION

The instructions which follow this term indicate situations where failure to follow the instructions could cause injury when using the machine or physical damage to equipment and surroundings.

Symbols



..... This symbol (\triangle) indicates something that you should be careful of. The picture inside the triangle indicates the nature of the caution that must be taken.
(For example, the symbol at left means "beware of injury".)



..... This symbol (\bullet) indicates something that you must not do.



..... This symbol (\bullet) indicates something that you must do. The picture inside the circle indicates the nature of the thing that must be done.
(For example, the symbol at left means "you must make the ground connection.")

NOTE ON SAFETY

⚠ WARNING



Do not put your hand into any openings near the belt. As your hands could get caught in the belt, and serious injury could result.



⚠ CAUTION

Environmental requirements

- | | |
|---|---|
| <p>⚠ Use the sewing machine in an area which is free from sources of strong electrical noise such as high - frequency welders. Sources of strong electrical noise may cause problems with correct operation.</p> <p>⚠ Any fluctuations in the power supply voltage should be within +10% of the rated voltage for the machine. Voltage fluctuations which are greater than this may cause problems with correct operation.</p> <p>⚠ The power supply capacity should be greater than the requirements for the sewing machine's electrical consumption. Insufficient power supply capacity may cause problems with correct operation.</p> <p>⚠ The pneumatic delivery capability should be greater than the requirements for the sewing machine's total air consumption. Insufficient pneumatic delivery capability may cause problems with correct operation.</p> | <p>⚠ The ambient temperature should be within the range of 5°C to 35°C during use. Temperatures which are lower or higher than this may cause problems with correct operation.</p> <p>⚠ The relative humidity should be within the range of 45% to 85% during use, and no dew formation should occur in any devices. Excessively dry or humid environments and dew formation may cause problems with correct operation.</p> <p>⚠ Avoid exposure to direct sunlight during use. Exposure to direct sunlight may cause problems with correct operation.</p> <p>⚠ In the event of an electrical storm, turn off the power and disconnect the power cord from the wall outlet. Lightning may cause problems with correct operation.</p> |
|---|---|

Installation

- | | |
|--|---|
| <p>⚠ Machine installation should only be carried out by a qualified technician.</p> <p>⚠ Contact your Brother dealer or a qualified electrician for any electrical work that may need to be done.</p> <p>⚠ The sewing machine weighs is so heavy, that the installation should be carried out by two or more people.</p> <p>⚠ Do not connect the power cord until installation is complete, otherwise the machine may operate if the treadle is depressed by mistake, which could result in injury.</p> <p>⚠ Be sure to connect the ground. If the ground connection is not secure, you run a high risk of receiving a serious electric shock, and problems with correct operation may also occur.</p> | <p>⚠ All cords should be secured at least 25 mm away from any moving parts. Furthermore, do not excessively bend the cords or secure them too firmly with staples, otherwise there is the danger that fire or electric shocks could occur.</p> <p>⚠ Install the belt covers to the machine head and motor.</p> <p>⚠ If using a work table which has casters, the casters should be secured in such a way so that they cannot move.</p> <p>⚠ Be sure to wear protective goggles and gloves when handling the lubricating oil, so that no oil gets into your eyes or onto your skin, otherwise inflammation can result. Furthermore, do not drink the oil under any circumstances, as it can cause vomiting and diarrhoea. Keep the oil out of the reach of children.</p> |
|--|---|

⚠ CAUTION

Sewing



This sewing machine should only be used by operators who have received the necessary training in safe use beforehand.



The sewing machine should not be used for any applications other than sewing.



Be sure to wear protective goggles when using the machine.

If goggles are not worn, there is the danger that if a needle breaks, parts of the broken needle may enter your eyes and injury may result.



Turn off the power switch at the following times. Otherwise the machine may operate if the treadle is depressed by mistake, which could result in injury.

- When threading the needle
- When replacing the bobbin and needle
- When not using the machine and when leaving the machine unattended

* The motor will keep turning even after the power is switched off as a result of the motor's inertia. Wait until the motor stops fully before starting work.



If using a work table which has casters, the casters should be secured in such a way so that they cannot move.



Attach all safety devices before using the sewing machine. If the machine is used without these devices attached, injury may result.



Do not touch any of the moving parts or press any objects against the machine while sewing, as this may result in personal injury or damage to the machine.



If an error occurs in machine, or if abnormal noises or smells are noticed, immediately turn off the power switch. Then contact your nearest dealer or a qualified technician.



If the machine develops a problem, contact your nearest dealer or a qualified technician.

Cleaning



Turn off the power switch before carrying out cleaning, otherwise the machine may operate if the treadle is depressed by mistake, which could result in injury.

* The motor will keep turning even after the power is switched off as a result of the motor's inertia. Wait until the motor stops fully before starting work.



Be sure to wear protective goggles and gloves when handling the lubricating oil, so that no oil gets into your eyes or onto your skin, otherwise inflammation can result.

Furthermore, do not drink the oil under any circumstances, as it can cause vomiting and diarrhoea. Keep the oil out of the reach of children.

Maintenance and inspection



Maintenance and inspection of the sewing machine should only be carried out by a qualified technician.



Ask your dealer or a qualified electrician to carry out any maintenance and inspection of the electrical system.



Turn off the power switch and disconnect the power cord from the wall outlet at the following times, otherwise the machine may operate if the treadle is depressed by mistake, which could result in injury.

- When carrying out inspection, adjustment and maintenance
- When replacing consumable parts such as the looper and knife

* The motor will keep turning even after the power is switched off as a result of the motor's inertia. Wait until the motor stops fully before starting work.

Disconnect the air hoses from the air supply and wait for



If the power switch and air need to be left on when carrying out some adjustment, be extremely careful to observe all safety precautions.



the needle on the pressure gauge to drop to "0" before carrying out inspection, adjustment and repair of any parts which use pneumatic equipment.



Use only the proper replacement parts as specified by our company.



If any safety devices have been removed, be absolutely sure to re-install them to their original positions and check that they operate correctly before using the machine.



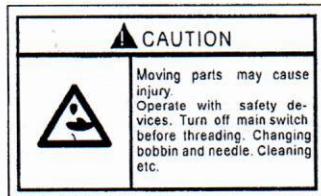
Any problems in machine operation which result from unauthorized modifications to the machine will not be covered by the warranty.

WARNING LABELS

The following warning labels appear on the sewing machine.

Please follow the instructions on the labels at all times when using the machine. If the labels have been removed or are difficult to read. Please contact your nearest dealer.

1



Safety devices

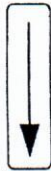
- ① Finger guard
- ② Thread take - up cover
- ③ Belt cover, etc.

2



Be sure to connect the ground. If the ground connection is not secure, you run the risk of receiving a serious electric shock.

3



Direction of operation

CONTENT

Operation Instruction

1. Brief instruction	1
2. Main technical specifications	1
3. Stitch length adjustment/reverse stitching	1
4. Adjusting the lifting amount of alternating presser foot	1
5. Winding the bobbin thread	2
6. Adjusting the bobbin thread tension	2
7. Threading the needle thread/adjusting the tension of needle thread	2
8. Maintenance	3
9. Oiling	3
10. Lubricating the rotating hook	4
11. Lubricating the machine head	4
12. Adjusting the feed dog	5
13. Pre-adjusting the needle height	5
14. Adjusting the position of needle and the needle hole	6
15. Adjusting the position of the bottom feed dog	6
16. Position of the needle and the rotating hook	7
17. Adjusting the lifting amount of alternating hook	7
18. Top feed adjustment	8
19. Needle thread tension releasing	8
20. Bobbin winder	8

Parts Manual

1. Machine casting components	9-10
2. Needle and presser foot components	11-12
3. Rocking shaft bracket components	13-14
4. Thread take-up components	15-16
5. Thread tension and thread tension releasing components	17-18
6. Upper shaft and rocking shaft components	19-20
7. Rocking shaft components	21-22
8. Feed adjustment components	23-24
9. Vertical shaft	25-26
10. Lower feed components	27-28
11. Lower shaft and rotating hook	29-30
12. Knee lifter control components	31-32
13. Accessories	33-34

Operation Instruction

1. Brief introduction

This series machines adopt compound feed mechanism with large amount of alternating presser foot lifter which assures the sewing capability of hard materials. The worktable of the small type of cylinder enlarges the working space.

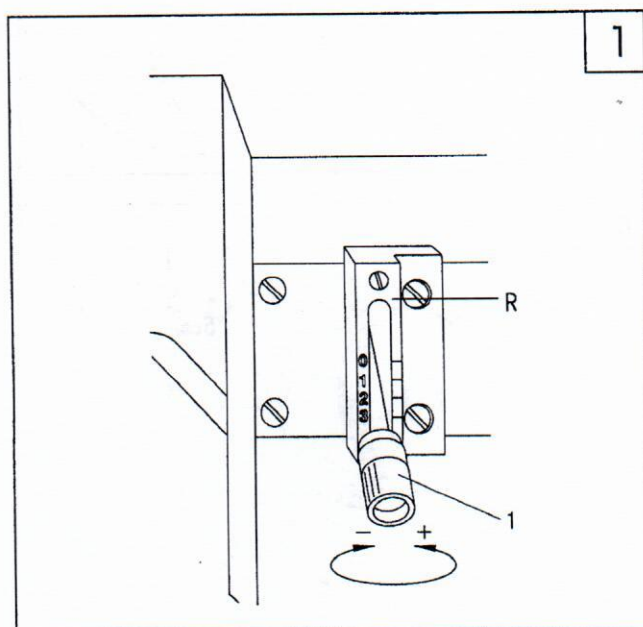
These machine are widely used in manufacturing clothes, bags, leather products and trimming of the shoe, cushion and suitcase.

2. Main specifications

Model	TW3-P335	TW3-P335V	TW3-P335B	TW3-P335VB
Max.sewing speed	2400s.p.m			
Max.stitch length	6mm			
Needle bar stroke	33.4mm			
Presser foot lift height	10mm by hand, 14mm by knee			
Max. lifting amount of presser foot	7mm			
Needle	DP×17 14#-18#			
Cylinder diameter	φ 46.5mm			
Lubrication	By hand			
Hook	Standard	Standard	1.4 times	1.4 times
Motor power	370w			

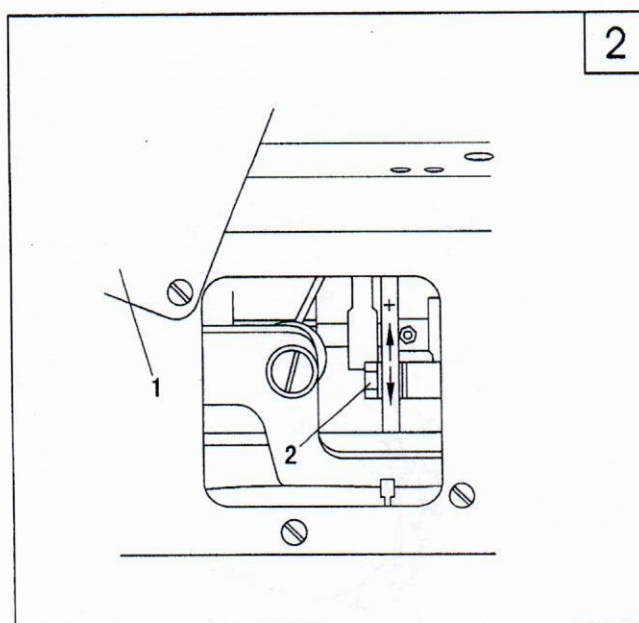
3. Stitch length adjustment/reverse stitching (Fig.1)

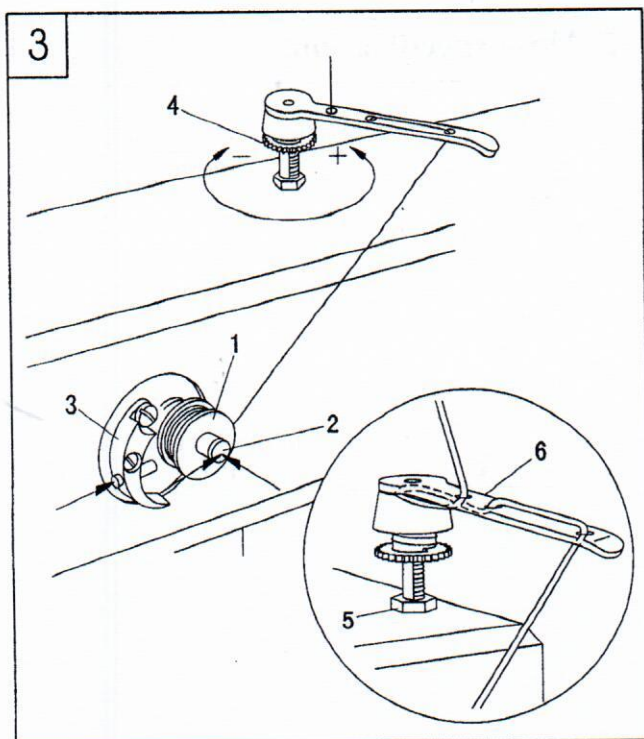
- 1.Adjust the stitch length by turning nut 1;
- 2.When reverse sewing, push nut 1 to mark R as much as possible.



4. Adjusting the lifting amount of the presser foot (Fig.2)

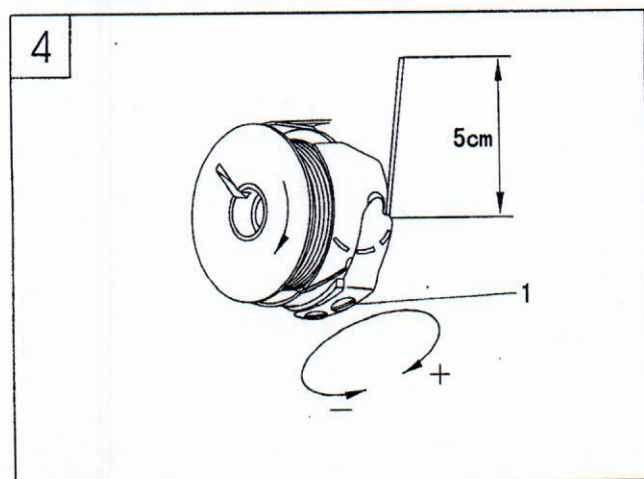
Open the rear cover 1, loosen screw 2, and move it up and down as required.





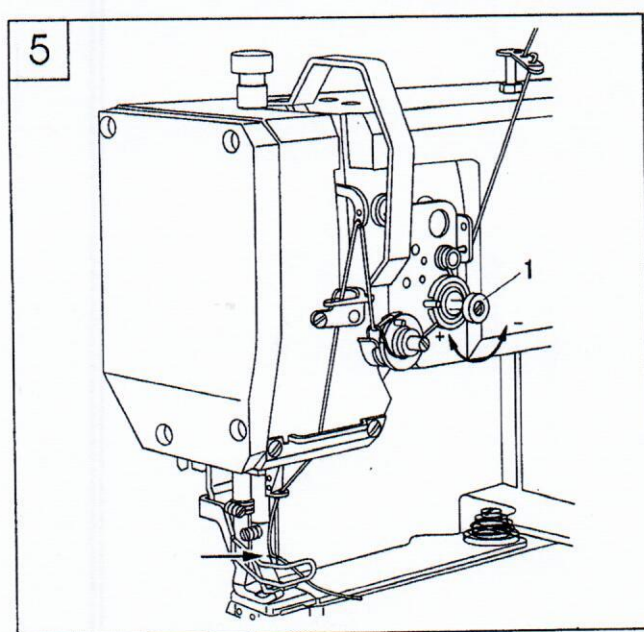
5. Winding the bobbin thread (Fig.3)

1. Put the bobbin into the bobbin shaft 2;
2. As Fig.3 shows, draw out the thread and winding clockwise to the bobbin several times;
3. Before winding, press down the winding shaft 2 and the hook gib 3;
4. Adjusting the bobbin 1 thread tension by the screw 4;
5. When the bobbin is full, the bobbin winder will automatically stop.
If the winding is abnormal, loosen the screw 5, and as required, move the thread guide 6, then tighten the screw 5.



6. Adjusting the bobbin thread tension (Fig.4)

1. Draw out the bobbin thread;
※ When the bobbin thread is drawn out, the bobbin should run as the arrow goes.
2. Adjusting the bobbin thread tension by screw 1.



7. Threading the needle thread / adjusting the tension of the needle thread (Fig.5)

1. Threading as the Fig shows;
※ Pass the thread to the eye of the needle from the left (Fig. Arrow)
2. Adjusting the needle thread tension by the screw 1.

8. Maintenance

Clean the rotating hook clearance	Once a day
Normal oiling	Twice a week
Front parts oiling	Twice a week
Check the oil box	Once a week
Clean the rotating hook	Once a week
Upper feed driving eccentric oiling	Once a year

※ The above data is due to the normal situation.

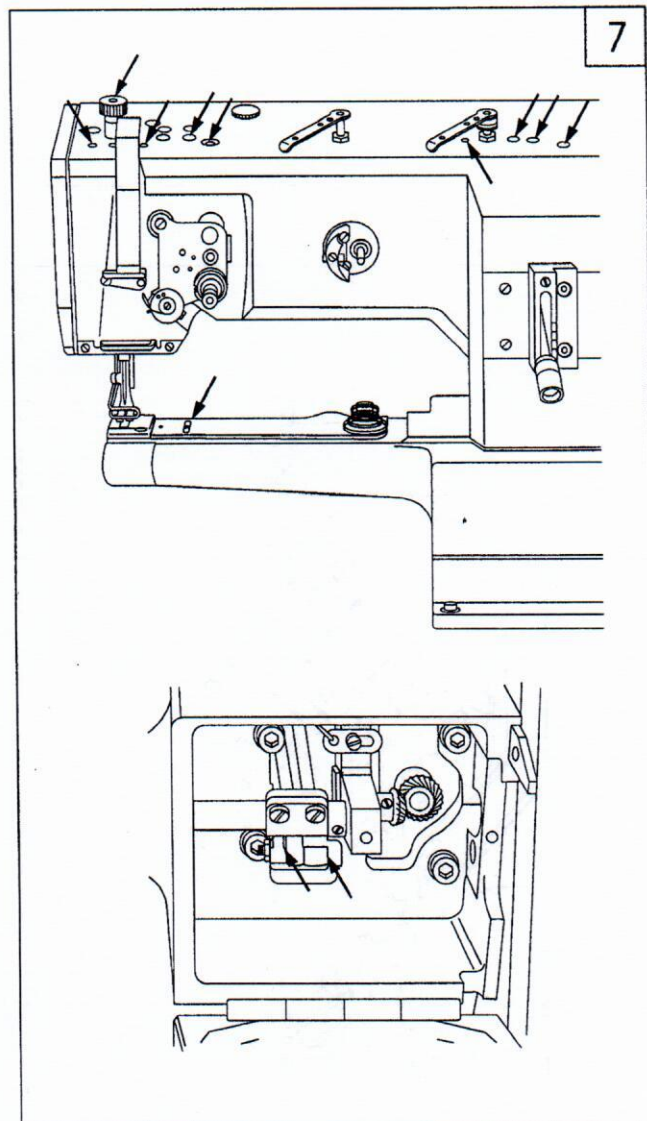
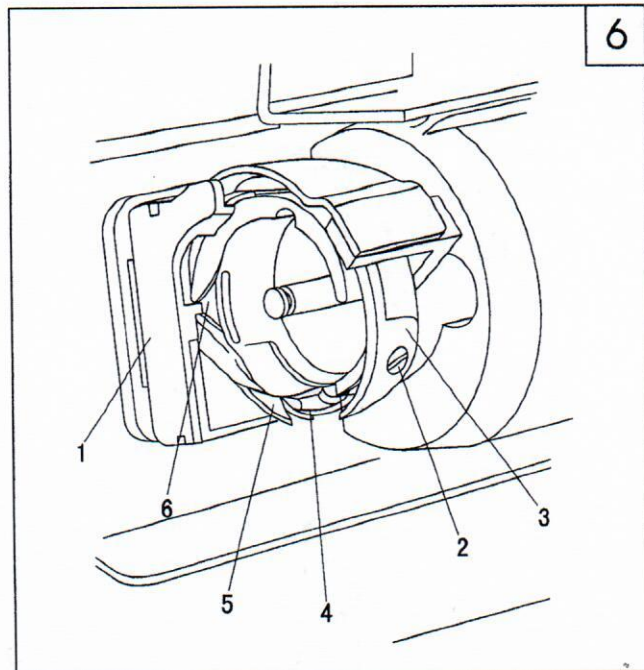
If the machine is used frequently, the interval of the maintenance should be shortened.

Maintenance for rotating hook(Fig.6)

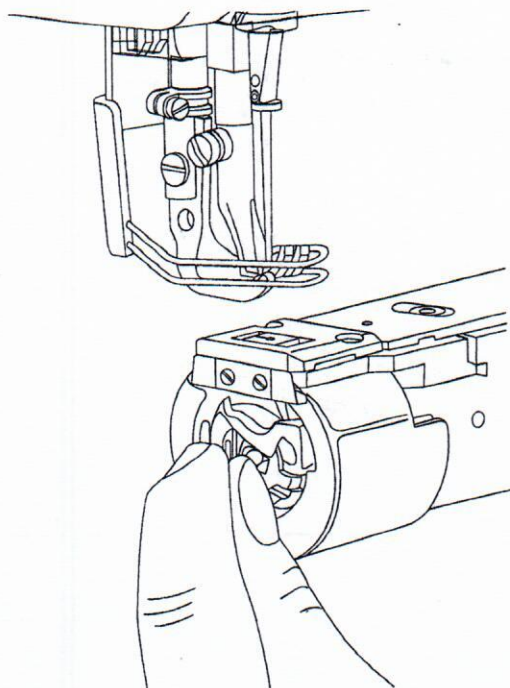
1. Clean the rotating hook with brush every day, and constant use needs more frequent cleansing.
2. Clean the rotating hook thoroughly every week. As follows;
 - a. Open the cover plate and lift the needle bar to its highest point;
 - b. Take out the bobbin case and the bobbin;
 - c. Release the position block 1;
 - d. Loosen the screw 2 and take out the hook point;
 - e. Turn the balance wheel until the point 4 and 5 reach at the same height;
 - f. Take out the rotating hook and clean it with oil.
 - g. Installation is a reverse process. Make sure that the position block 1 is in the groove 6;
 - h. Close the cover plate.

9.Oiling(Fig.7)

The machine must be oiled at the mark (arrow) twice a week.

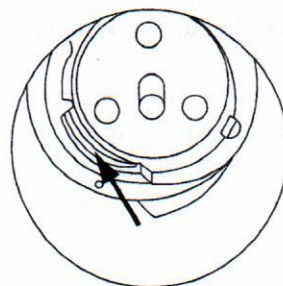


8

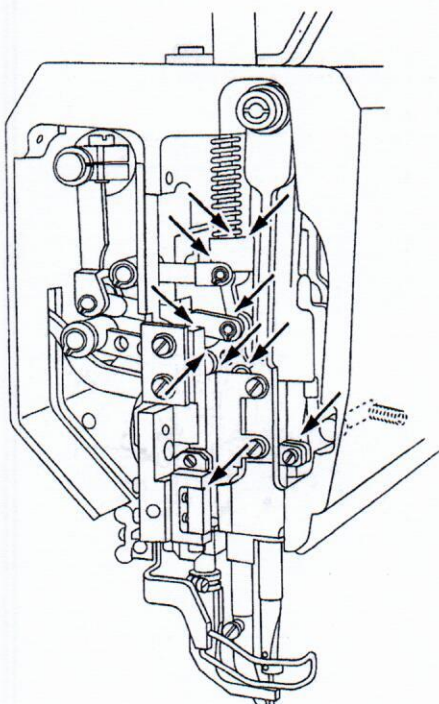


10. Lubricating the rotating hook(Fig.8)

1. Take out the bobbin case;
2. Oil the mark(arrow) with one or two drops every day;
3. Insert the bobbin case.



9



11. Lubricating the machine head (Fig.9)

1. Loosen the face plate;
2. Oil the moving parts as the fig shows twice a week;
3. Install the face plate.

12. Adjusting the feed dog

1. Positioning the feed dog in the direction of sewing (Fig.10)

a. Loosen the screw 2;

b. Adjusting the feed dog as required;

c. Tighten the screw 1;

※ The feed dog must be of the same distance from the left and the right of the needle cutout.

2. Positioning the feed dog in the direction of sewing (Fig.12)

a. Set it to the max stitch length;

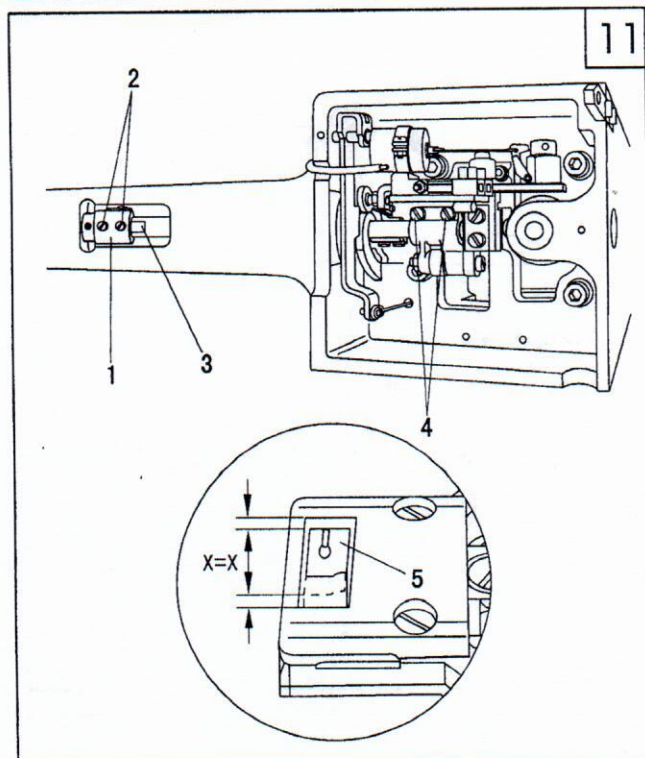
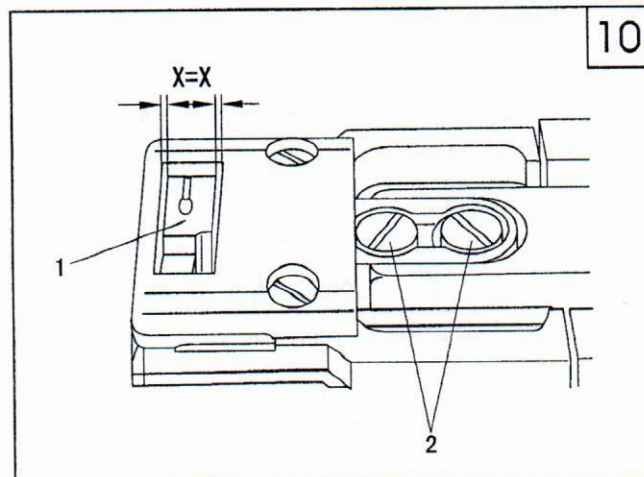
b. Loosen the screw 2 to turn the crank 1 to the left; tighten the screw 2 until it prop up the surface 3 of the shaft;

c. Loosen the screw 4;

d. Move the feed dog as required;

e. Tighten the screw 4.

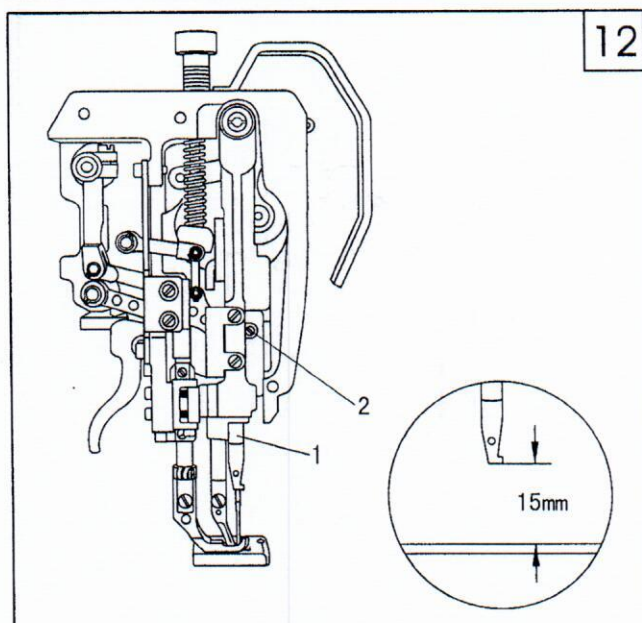
※ When the stitch length is at the max, the front and the rear clearance between the feed dog and the needle plate groove should be the same.



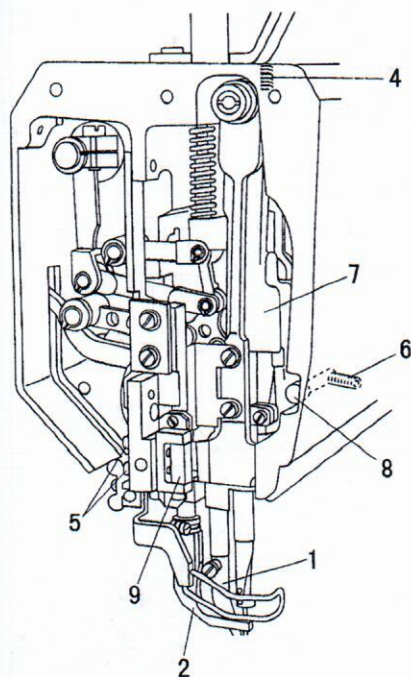
13. Pre-adjusting the needle height (Fig.12)

Move the needle bar 1 (by screw 2) up and down, and as required, adjust it to the right position.

※ When the needle bar is at its lowest position, the clearance between the needle plate and the needle bar should be 15 mm.



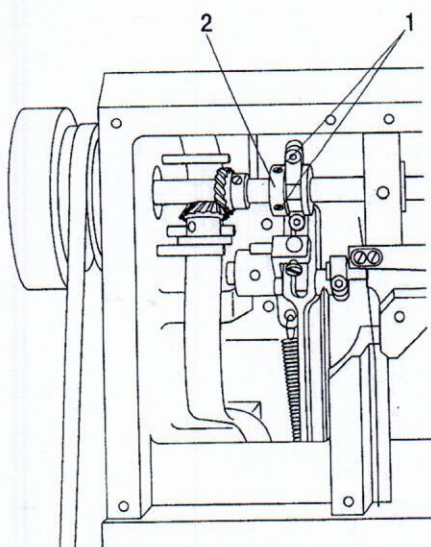
13



14. Adjusting the position of the needle and the needle hole (Fig. 13)

1. Loosen the rock shaft 1 and the presser foot 2;
 2. Adjust the stitch length to "0", and lift the needle bar to its highest position;
 3. Insert a new needle, and loosen the screw 3, 4, 5, 6;
 4. Turn the balance wheel and pass the needle directly through the feed dog;
 5. Move the needle bar frame 7 as required;
 6. Tighten the screw 3, 4, 5;
 7. Move the position pin 8 to make it touch the needle bar frame 7, and tighten the screw 6.
- ※ When the stitch length is at the "0", the needle must enter the hole exactly in the middle.

14

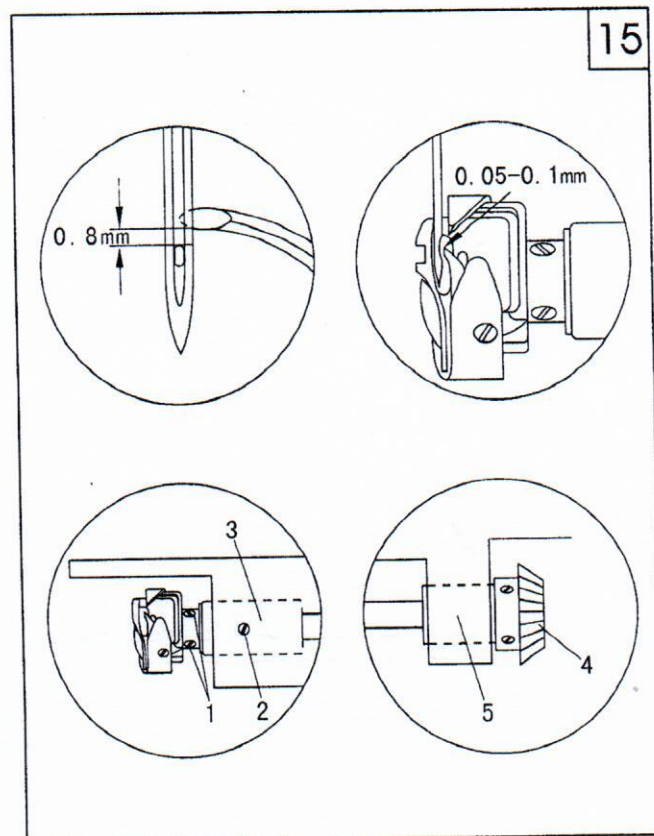


15. Adjusting the position of the bottom feed dog (Fig. 14)

1. Adjust the stitch length to its max;
 2. Loosen the screw 1 so the driving eccentric wheel 2 can turn on the shaft;
 3. Adjust the needle bar to its lowest position;
 4. Turn the eccentric wheel 2 to make the throw of eccentric upward, and turn it a bit as required;
 5. Tighten the screw 1;
 6. Test it as required.
- ※ Set the stitch length to its max, adjust the needle bar to its lowest position, and when the reverse feed lever is working, it will not feed.

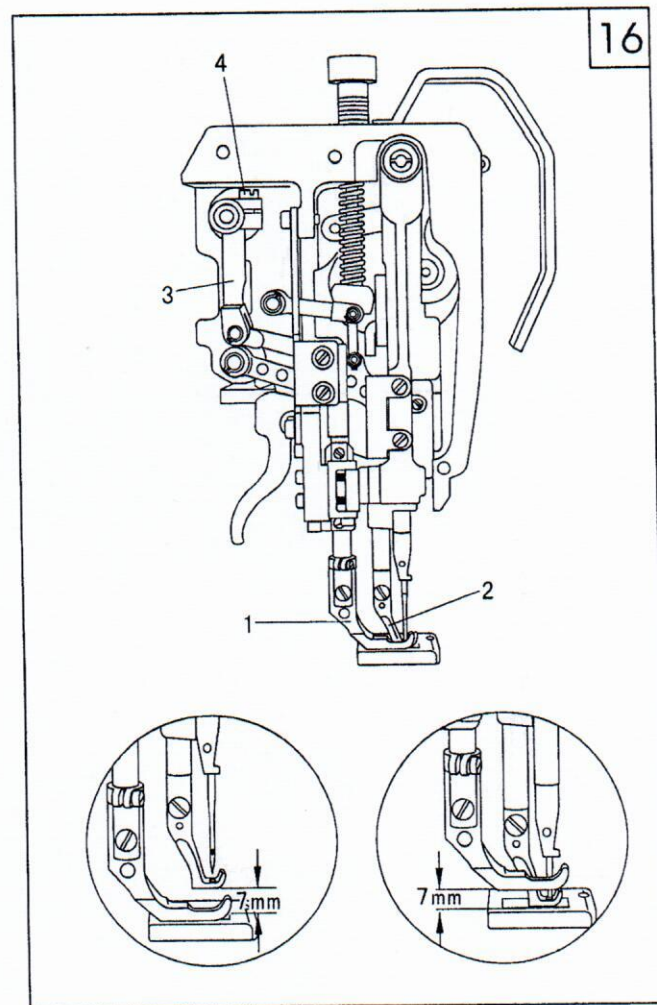
16. Position of the needle and the rotating hook (Fig.15)

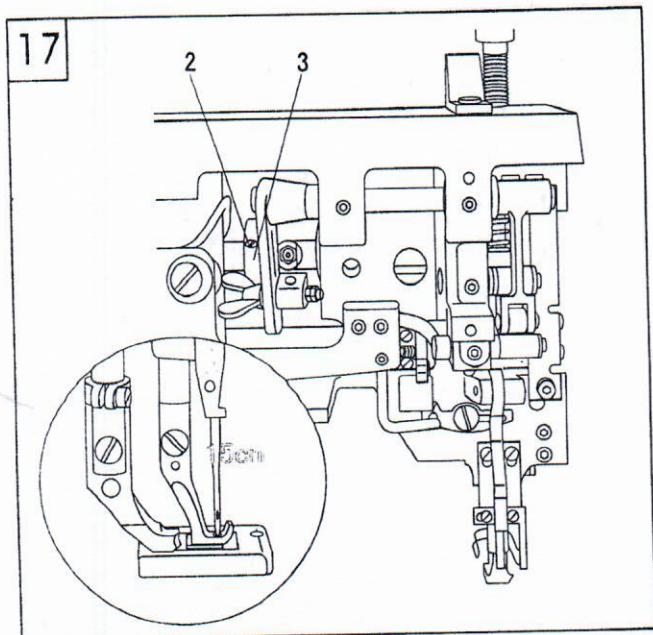
1. Adjust the stitch length to "0", and then loosen the screw 1 and 2;
 2. Turn the balance wheel until the needle is at its lowest position, and then lift it by 1.8mm;
 3. Move the rotating hook as required;
 4. Make the cover 3 touch the rotating hook, then tighten the screw 2;
 5. Make sure that the gear 4 touches the bushing 5, then tighten the screw 1.
- ※ Adjust the stitch length to "0", and lift the needle by 1.8mm.
- a. The hook point must reach the center of the needle and the clearance between them should be 0.05-0.1mm;
 - b. The vertical distance between the top of the needle hole and the hook point should be 0.8mm.



17. Adjusting the lifting amount of alternating presser foot (Fig.16)

1. Adjust the stitch length to "0" and adjust the lifting amount of alternating presser foot to its max;
 2. Lower the presser foot 1 on the needle plate;
 3. Turn the balance wheel until the walking foot 2 reaches its highest position;
 4. As required, move the crank 3 (by screw 4);
 5. Test as required.
- ※ When the stitch length is at the "0" and the lifting amount of alternating presser foot is at the max, turn the balance wheel to make sure that the clearance between the presser foot 1 and the walking foot 2 is 7.0mm.

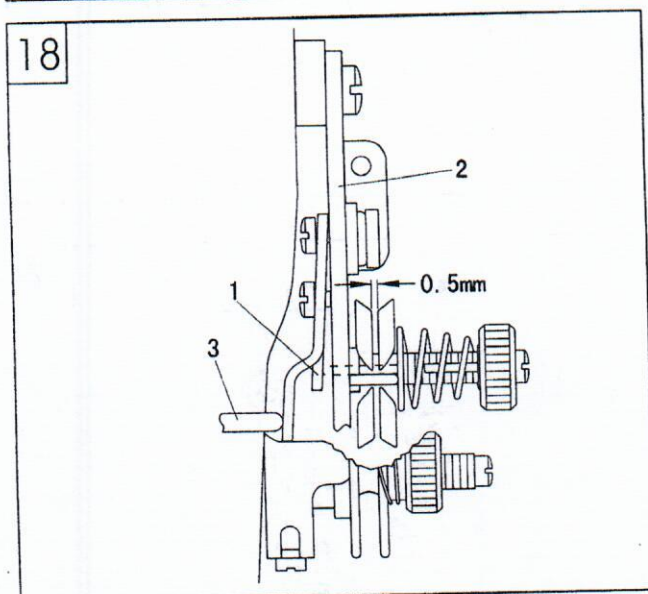




18. Adjusting the upper feed(Fig.17)

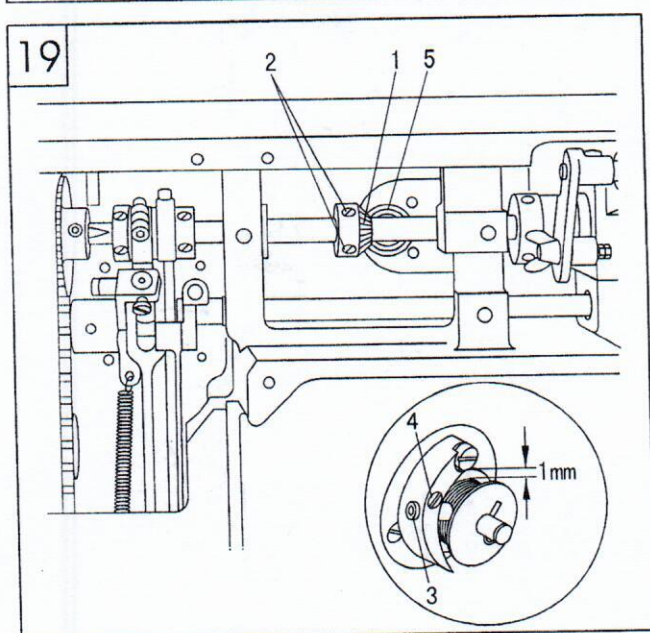
1. Lower the presser foot on the needle plate;
2. Loosen the screw 2 until the feed eccentric wheel can merely turn;
3. Adjust the feed eccentric wheel 3 as required;
4. Tighten the screw 2;
5. Test as required.

※ When the stitch length is at the max and the presser foot touches the needle plate, the walking foot and the needle should reach the needle plate simultaneously.



19. Needle thread tension releasing(Fig.18)

When the presser foot is lifted up, there must be a clearance of 0.5mm between the two tension plates (the minimum clearance is 0.5mm, when sewing with thick thread, it should be adjusted to 1mm, or more.). Adjust the adjusting plate as required.

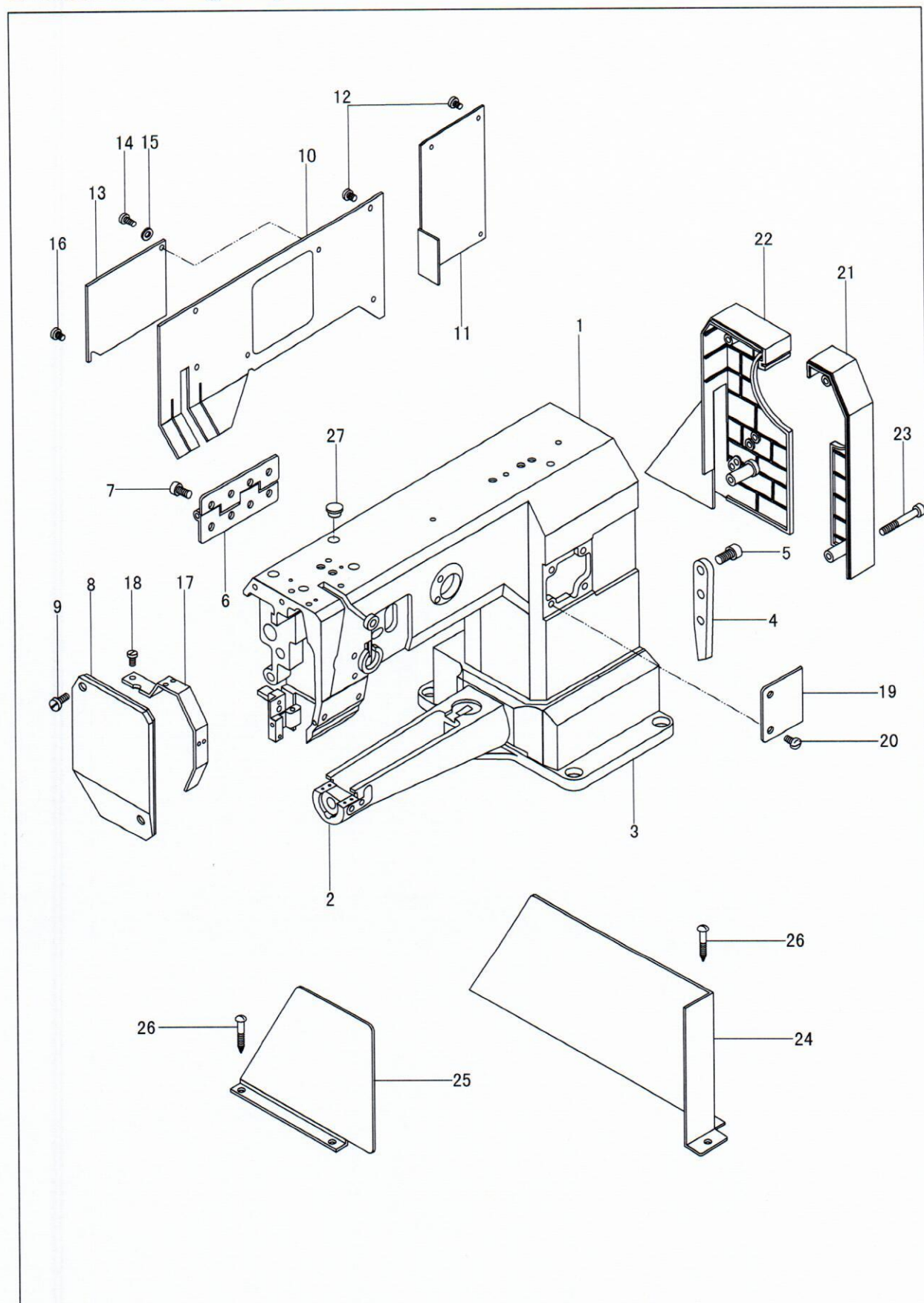


20. Bobbin winder (Fig.19)

1. When the winder switches on, its spindle must engage reliable; when the winder switches off, the friction wheel 5 and the driving wheel 1 should get apart;
2. When the thread is approx. 1mm from the edge of the bobbin, the winder will switch off automatically;
3. When operating, insert the bobbin to the winder, thread the bobbin thread and switch the winder on. Adjust the pin 3 and the screw 4 as required.

Parts Manual

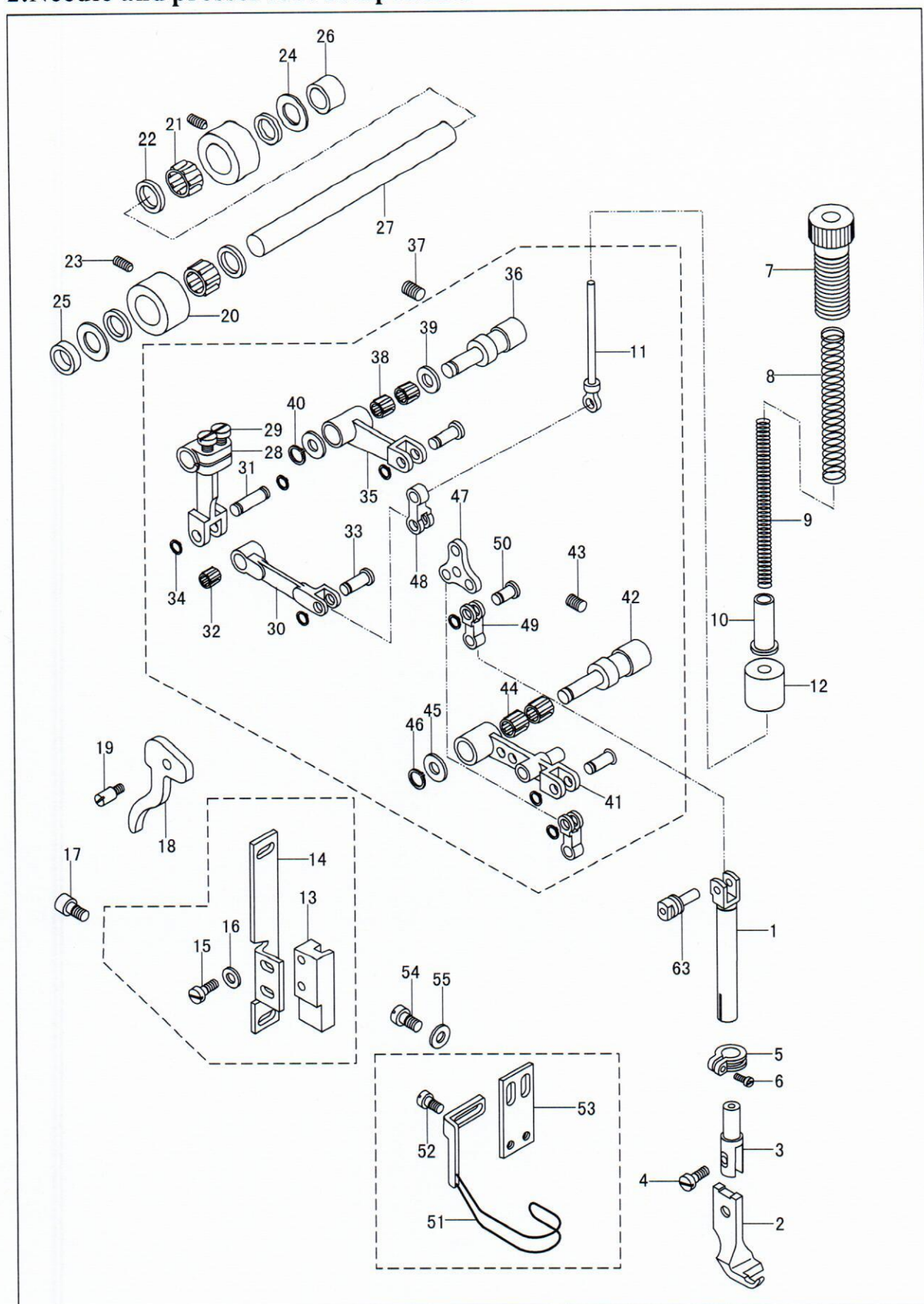
1. Machine casting components



1. Machine casting components

NO.	Part Number	Name	Qt.				Remark
			P335	P335V	P335B	P335VB	
1	70101080	Arm	1	1	1	1	
2		Cylinder bed	1	1	1	1	
3		Base	1	1	1	1	
4	70212220	Connecting block	1	1	1	1	
5	70215048	Screw	3	3	3	3	GB65-M5×12
6	70211410	Hinge	1	1	1	1	TW3-341
7	70215818	Screw	8	8	8	8	GB70-M8×15
8	70211411	Face Plate	1	1	1	1	
9	70215053	Screw	2	2	2	2	GB65-M5×16
10	70211412	Rear cover(left)	1	1	1	1	
11	70211413	Rear cover(right)	1	1	1	1	
12	70215009	Screw	8	8	8	8	GB67-M5×8
13	70211414	Small cover	1	1	1	1	
14	70215819	Screw	1	1	1	1	
15	70218818	Spring	1	1	1	1	GB1972-80
16	70215026	Screw	1	1	1	1	GB67-M4×6
17	70211415	Safety cover	1	1	1	1	
18	70215009	Screw	1	1	1	1	GB67-M5×8
19	70211416	Front cover	1	1	1	1	
20	70215009	Screw	2	2	2	2	GB67-M5×8
21	70221390	Safety cover	1	1	1	1	
22	7022139001	Safety cover	1	1	1	1	
23	70215002	Screw	4	4	4	4	GB70-85 M5×35
24	70211417	Safety cover	1	1	1	1	
25	70211418	Safety cover	1	1	1	1	
26	70221033	Wood screw	5	5	5	5	GB845 ST4. 2×18
27	70216320	Plug	2	2	2	2	

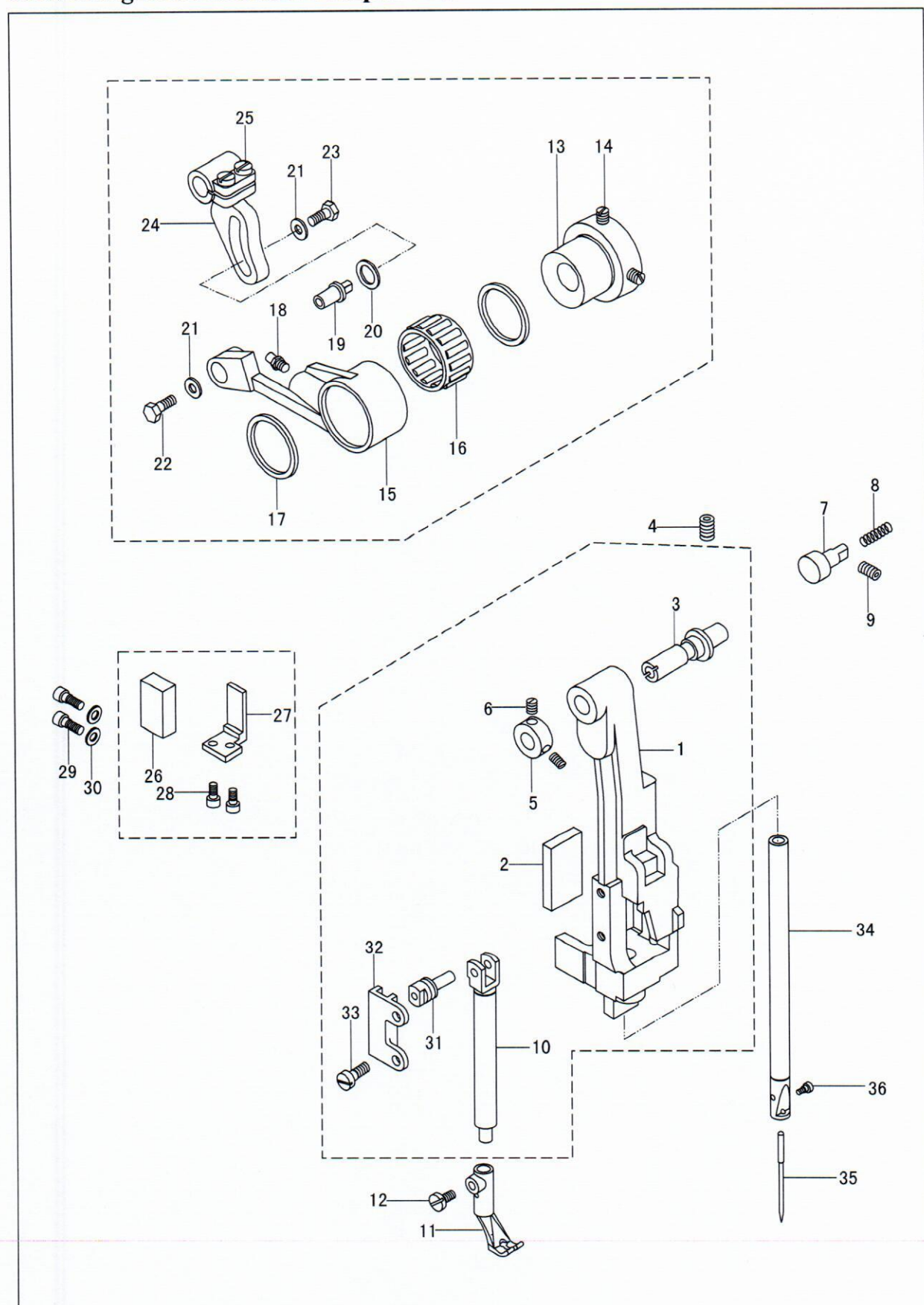
2. Needle and presser foot components



2. Needle and presser foot components

NO.	Part Number	Name	Qt.				Remark
			P335	P335V	P335B	P335VB	
1	70205380	Presser foot bar	1	1	1	1	
2	70202330	Presser foot <i>310022</i>	1	/	1	/	
		Presser foot <i>1335 411</i>	/	1	/	1	
3	70202331	Presser foot bracket	1	1	1	1	
4	70213310	Screw	1	1	1	1	
5	70215820	Collar	1	1	1	1	
6	702090901	Screw	1	1	1	1	
7	70215010	Screw	1	1	1	1	M15×1
8	70215821	Spring	1	1	1	1	
9	70217370	Spring	1	1	1	1	
10	70217371	Spring bushing	1	1	1	1	
11	70208405	Guide bar	1	1	1	1	
12	70211419	Oil felt	1	1	1	1	
13	70216321	Sliding guide	1	1	1	1	
14	70201295	Set plate	1	1	1	1	
15	7020129501	Screw	2	2	2	2	GB65-M4×10
16	7020129502	Screw	2	2	2	2	GB97.1-4
17	7020129503	Screw	2	2	2	2	GB70-M5×10
18	70215009	Presser foot lifting bar	1	1	1	1	
19	70205381	Shaft for presser foot lifting bar	1	1	1	1	
20	70215822	Bushing	2	2	2	2	
21	70208406	Bushing	2	2	2	2	Φ10×Φ13×9.7
22	70204130	Retainer	4	4	4	4	
23	70216322	Screw	2	2	2	2	GB77-M6×5
24	70215057	Spacer	2	2	2	2	
25	70218280	Washer(front)	1	1	1	1	
26	70218281	Washer(rear)	1	1	1	1	
27	70218282	Upper feed shaft	1	1	1	1	
28	70203360	Crank(I)	1	1	1	1	
29	70201296	Screw	2	2	2	2	GB65-M5×12
30	70215008	Presser foot lifting link	1	1	1	1	
31	702129701	Connecting pin	1	1	1	1	
32	7020129602	Bearing	1	1	1	1	Φ5×Φ8×7.7
33	7020129603	Spring	6	6	6	6	GB894.1-5
34	7020129604	Connecting pin(big)	3	3	3	3	
35	7020129605	Crank(II)	1	1	1	1	
36	7020129606	Pin shaft	1	1	1	1	
37	7020129607	Screw	1	1	1	1	GB77-M6×8
38	70215054	Bearing	2	2	2	2	Φ6×Φ9×7.7
39	7020129608	Spacer	2	2	2	2	
40	7020129609	Spring	1	1	1	1	GB894.1-6
41	7020129610	Crank(III)	1	1	1	1	
42	7020129611	Pin shaft	1	1	1	1	
43	7020129612	Screw	1	1	1	1	GB77-M6×8
44	70215054	Bearing	2	2	2	2	Φ7×Φ10×7.5
45	7020129613	Spacer	1	1	1	1	
46	7020129614	Spring	1	1	1	1	GB894.1-7
47	7020129615	Swing plate	1	1	1	1	
48	7020129616	Link	1	1	1	1	
49	7020129617	Link	2	2	2	2	
50	7020129618	Connecting pin(small)	1	1	1	1	
51	7020129619	Finger guard assembly	1	1	1	1	
52	70201297	Screw	2	2	2	2	GB65-M4×8
53	70215026	Set plate	1	1	1	1	
54	7020129701	Screw	2	2	2	2	GB65-M5×8
55	70215009	Spacer	2	2	2	2	GB97.1-5

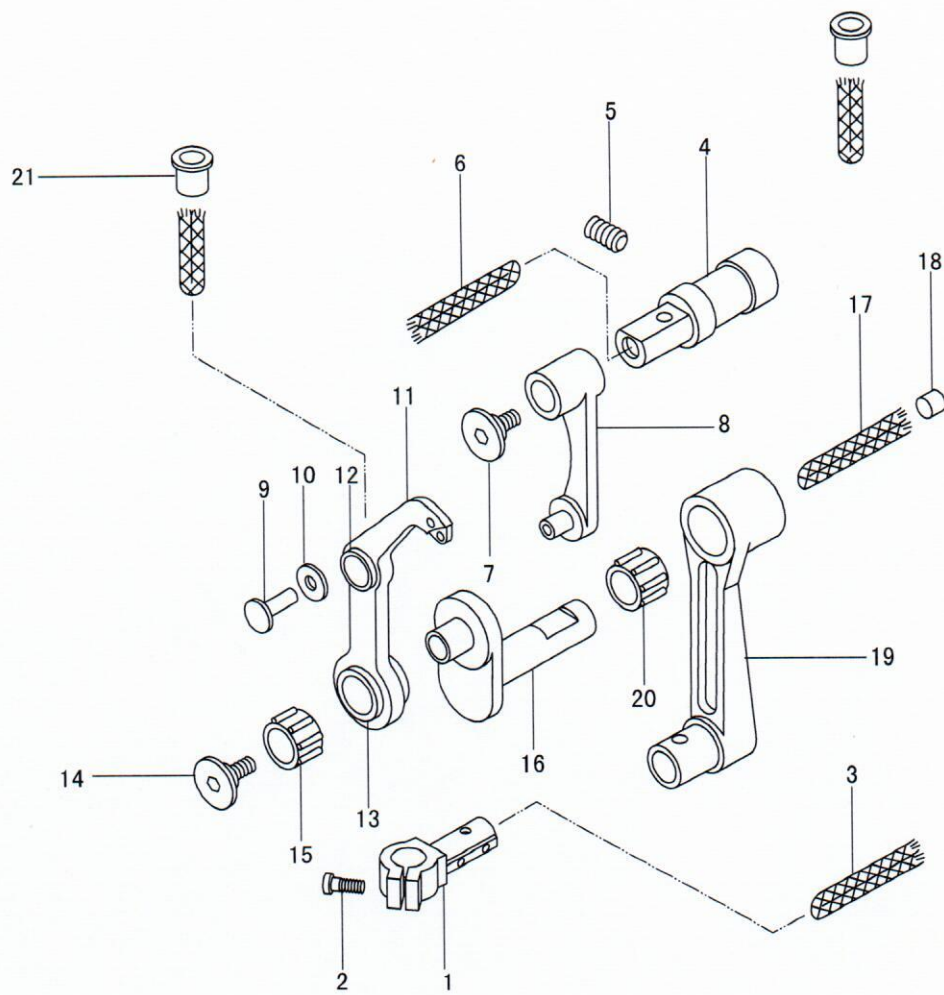
3. Rocking shaft bracket components



3. Rocking shaft bracket components

No.	Part Number	Name	Qt.				Remark
			P335	P335V	P335B	P335VB	
1	70213311	Need bar-rocking frame	1	1	1	1	GB77-M6×8
2	70216323	Oil felt	1	1	1	1	
3	70210390	Hinge shaft	1	1	1	1	
4	70215057	Screw	1	1	1	1	
5	70209091	Collar	1	1	1	1	M3×3
6	70215061	Screw	2	2	2	2	
7	70210391	Position pin	1	1	1	1	CB77-M5×8
8	70217372	Spring	1	1	1	1	
9	70215049	Screw	1	1	1	1	
10	70205382	walking foot bar	1	1	1	1	
11	70202332	Walking foot	1	/	1	/	M6×0.75
	70202333	Walking foot	/	1	/	1	
12	70215823	Screw	1	1	1	1	
13	70201298	Presser foot lifter cam	1	1	1	1	
14	7020129801	Screw	2	2	2	2	φ22× φ26×12.6
15	7020129802	Link	1	1	1	1	
16	7020129803	Bearing	1	1	1	1	GB1152-89 M6
17	7020129804	Retainer	2	2	2	2	
18		Oil cup	1	1	1	1	GB5781-M5×8
19	7020129805	Connecting pin	1	1	1	1	
20	7020129806	Spacer	1	1	1	1	
21	7020129807	Spacer	2	2	2	2	
22	7020129808	Screw	1	1	1	1	GB5781-M5×10
23	7020129809	Screw	1	1	1	1	
24	7020129810	Adjusting crank	1	1	1	1	GB65-M5×12
25	7020129811	Screw	2	2	2	2	
26	70212221	Position block	1	1	1	1	GB70-M4×8
27	70213312	Set plate	1	1	1	1	
28	70215837	Screw	2	2	2	2	
29	70215572	Screw	2	2	2	2	
30		Spacer	2	2	2	2	GB97.1-4
31	70212222	Sliding block	1	1	1	1	
32	70212223	Sliding guide	1	1	1	1	GB65-M4×8
33	70215017	Screw	2	2	2	2	
34	70203359	Needle bar	1	1	1	1	DP×35 16#
35	70221039	Needle	1	1	1	1	
36	7020335901	Screw	1	1	1	1	M3×5

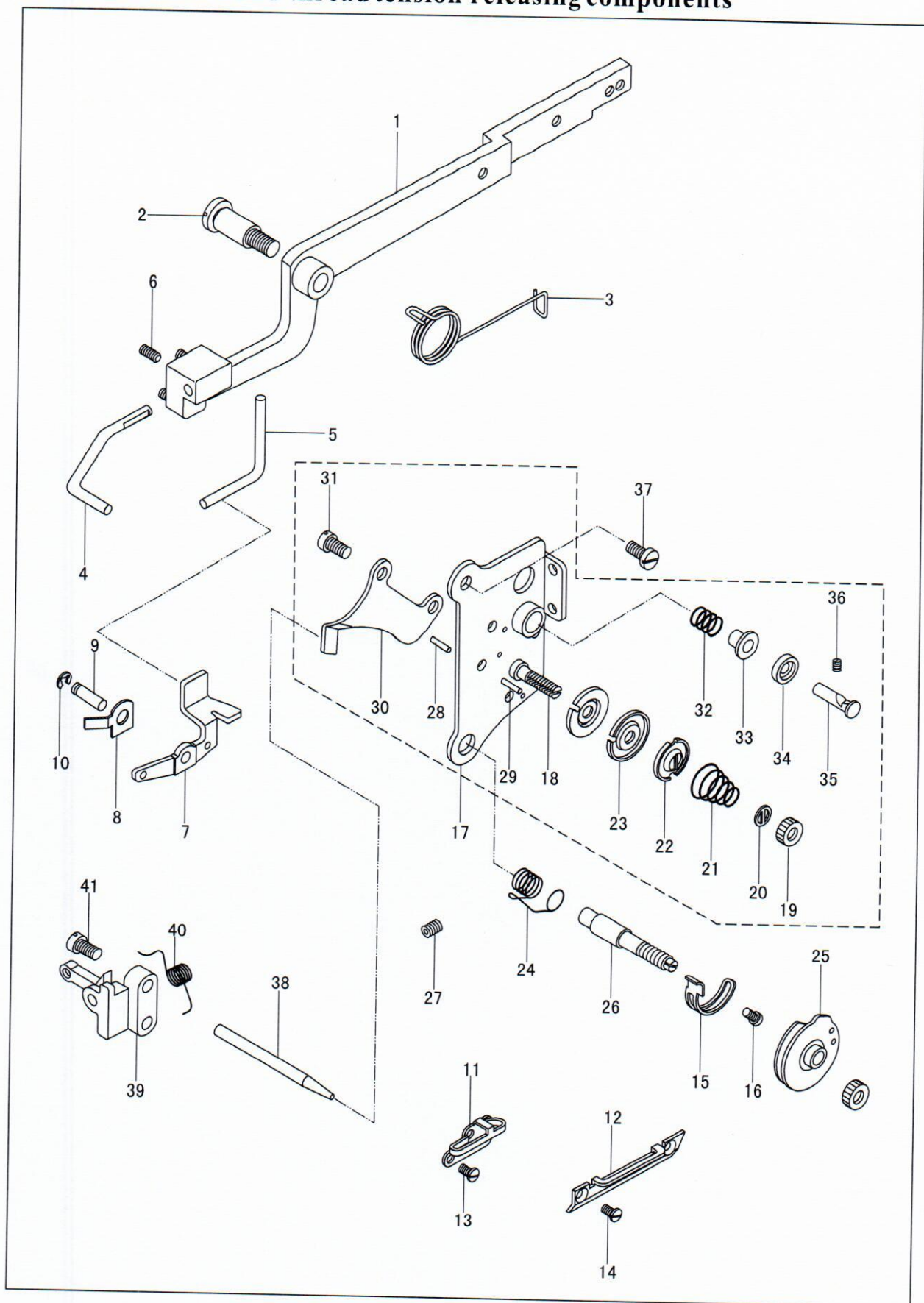
4.Thread take-up components



4.Thread take-up components

No.	Part Number	Name	Qt.				Remark
			P335	P335V	P335B	P335VB	
1	70205383	Needle bar connector	1	1	1	1	M4×10
2	70215017	Screw	1	1	1	1	
3		Oil wick	1	1	1	1	
4	70210392	Pin shaft	1	1	1	1	GB77-M6×8
5	70215057	Screw	1	1	1	1	
6		Oil wick	1	1	1	1	
7	70215817	Screw	1	1	1	1	
8	70206295	Crank	1	1	1	1	
9		Connecting pin	1	1	1	1	
10		Spacer	1	1	1	1	
11	70205384	Thread take-up lever	1	1	1	1	
12		Link bushing	1	1	1	1	
13		Bearing bushing	1	1	1	1	Φ7×Φ10×7.5
14	70215824	Screw	1	1	1	1	
15	70204005	Bearing	1	1	1	1	
16	70210393	Hinge shaft	1	1	1	1	
17		Oil wick	1	1	1	1	
18	70216324	Oil plug	1	1	1	1	
19	70205385	Needle bar link	1	1	1	1	Φ9×Φ12×12.7
20	70204131	Bearing	1	1	1	1	
21	70216325	Oil pipe	2	2	2	2	

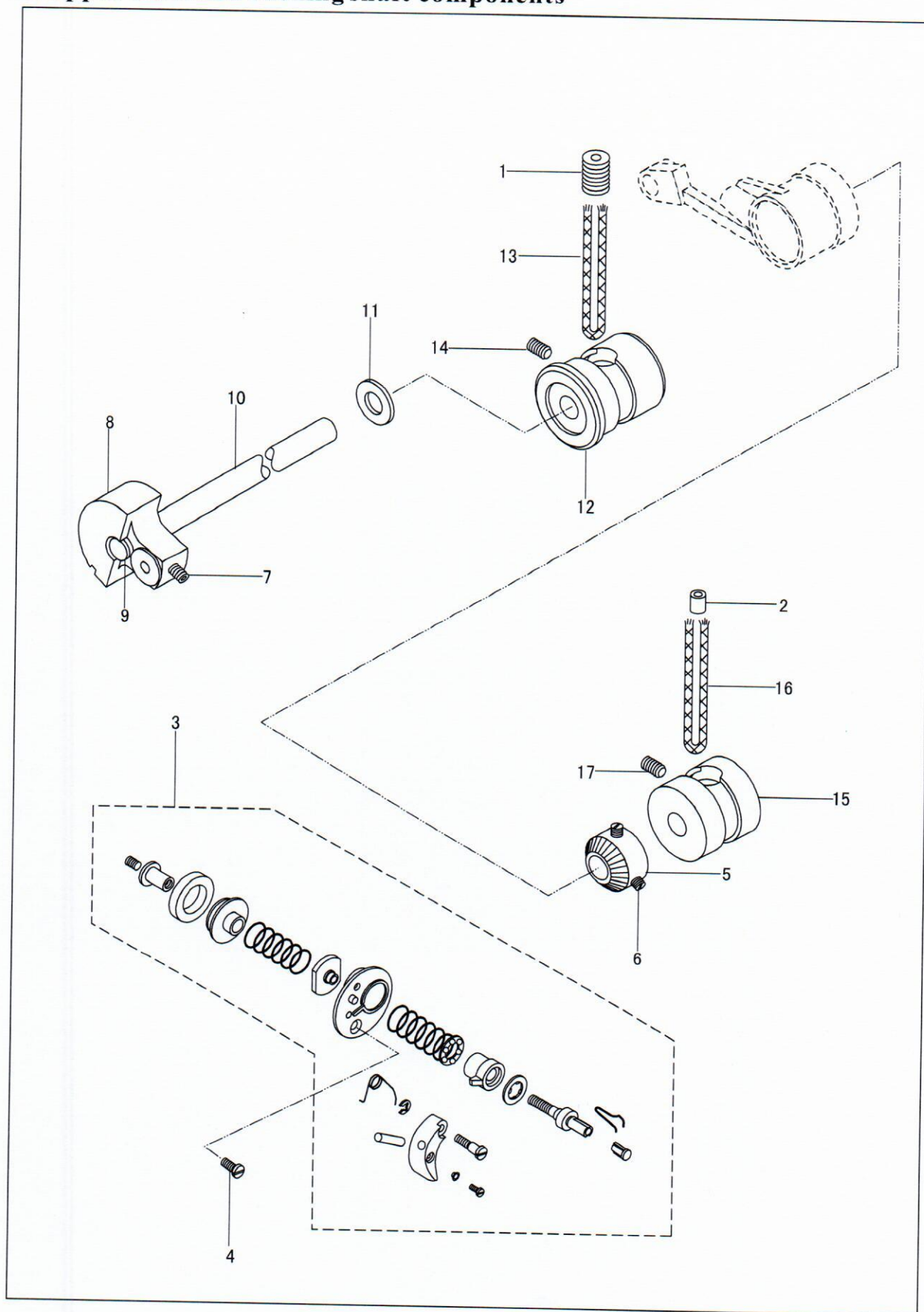
5.Thread tension and thread tension releasing components



5.Thread tension and thread tension releasing components

NO.	Part Number	Name	Qt.				Remark
			P335	P335V	P335B	P335VB	
1	70205386	Knee lifter lever	1	1	1	1	
2	70215825	Screw	1	1	1	1	
3	70217373	Spring	1	1	1	1	
4	70205387	Presser foot lift bent bar	1	1	1	1	
5	70205388	Thread releasing bent bar	1	1	1	1	
6		Screw	3	3	3	3	
7	70205389	Thread releasing lever	1	1	1	1	
8	70211420	Spring plate	1	1	1	1	
9	70210394	Pin	1	1	1	1	
10	70218021	Split ring	1	1	1	1	GB896-86 5
11	70214004	Thread guide(middle)	1	1	1	1	
12	70214090	Thread guide(low)	1	1	1	1	
13	70215009	Screw	1	1	1	1	M5×7
14	70215388	Screw	1	1	1	1	GB68-M4×8
15	70214002	Stopper plate	1	1	1	1	
16	70215042	Screw	1	1	1	1	GB65-M4×6
17	70201294	Set plate	1	1	1	1	
18	7020129401	Bolt	1	1	1	1	
19	7020129402	Nut	2	2	2	2	
20	7020129403	Washer	1	1	1	1	
21	7020129404	Spring	1	1	1	1	
22	7020129405	Thread releasing plate	1	1	1	1	
23	7020129406	Thread tension plate	2	2	2	2	
24	7020129407	Spring	1	1	1	1	
25	7020129408	Thread control plate assembly	1	1	1	1	
26	7020129409	Bolt	1	1	1	1	
27	7020129410	Screw	1	1	1	1	GB77-M5×8
28	7020129411	Pin	2	2	2	2	
29	7020129412	Thread releasing pin	1	1	1	1	
30	7020129413	Thread erecting plate	1	1	1	1	
31	7020129414	Screw	2	2	2	2	SM9/64"×40
32	7020129415	Spring	1	1	1	1	
33	7020129416	Thread tension cap	1	1	1	1	
34	7020129417	Thread tension disc	1	1	1	1	
35	7020129418	Pin	1	1	1	1	
36	7020129419	Screw	1	1	1	1	GB73-M4×8
37	70215006	Screw	1	1	1	1	GB67-M4×10
38	70210395	Thread releasing bar	1	1	1	1	
39	70201303	Thread releasing bracket assembly	1	1	1	1	
40	70217374	Spring	1	1	1	1	
41	70215430	Screw	2	2	2	2	M5×6

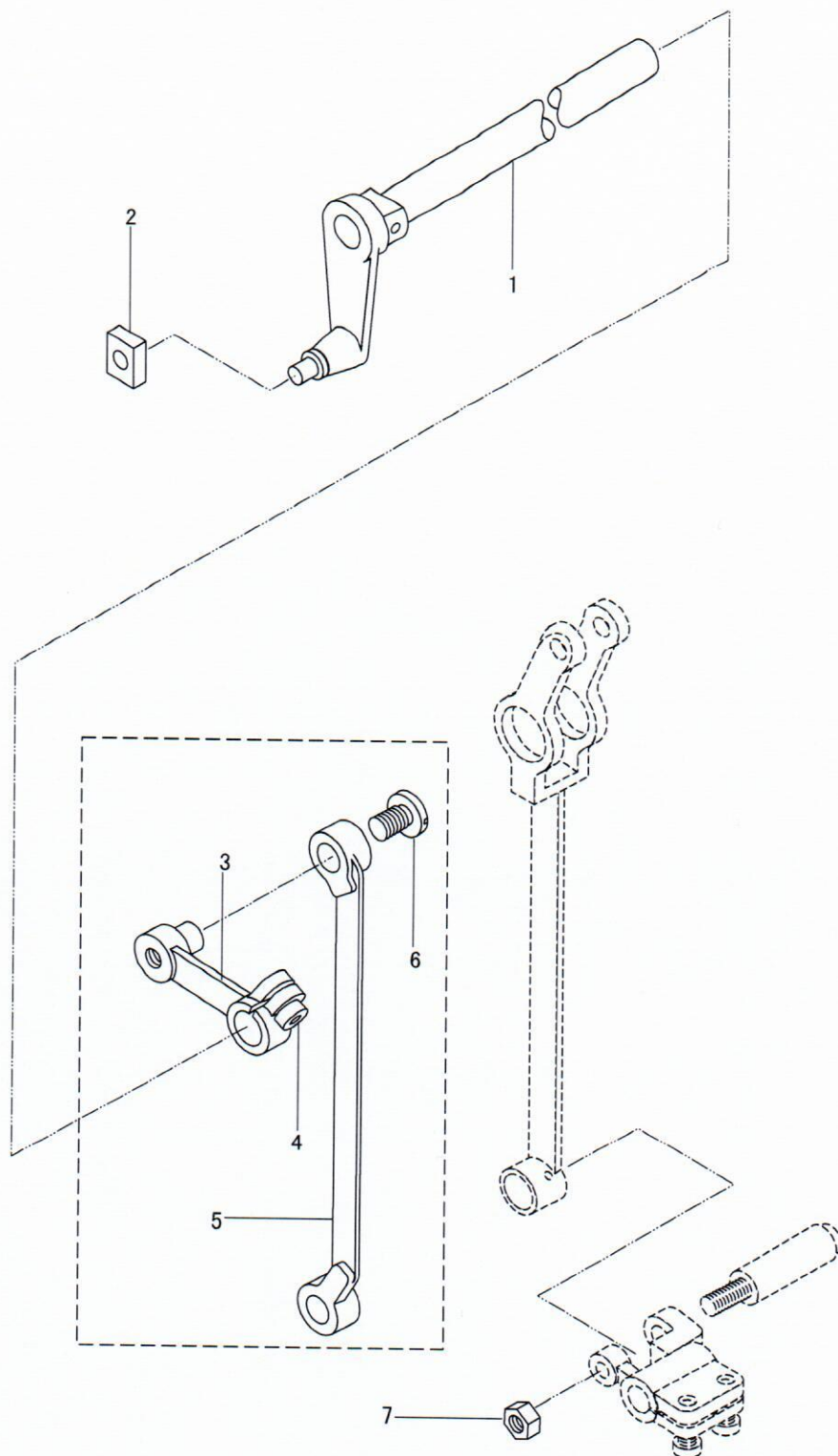
6. Upper shaft and rocking shaft components



6. Upper shaft and rocking shaft components

No.	Part Number	Name	Qt.				Remark
			P335	P335V	P335B	P335VB	
1	70216326	Oil plug	1	1	1	1	GB68-M4×8
2	70216319	Oil plug	1	1	1	1	
3	70201299	Oil plug bobbin winder assembly	1	1	1	1	
4	70215388	Screw	1	1	1	1	
5	70207210	Friction wheel	1	1	1	1	M6×0.75
6	70215050	Screw	2	2	2	2	
7	70215441	Screw	2	2	2	2	GB77-M6×5
8	70206296	Needle bar crank	1	1	1	1	
9	70216327	Oil plug	1	1	1	1	
10	70203361	Upper shaft	1	1	1	1	
11	70218283	Front spacer	1	1	1	1	
12	70208407	Front bushing	1	1	1	1	
13		Oil wick	1	1	1	1	GB77-M6×8
14	70215057	Screw	1	1	1	1	
15	70208408	Middle bushing	1	1	1	1	GB77-M6×8
16		Oil wick	1	1	1	1	
17	70215057	Screw	1	1	1	1	

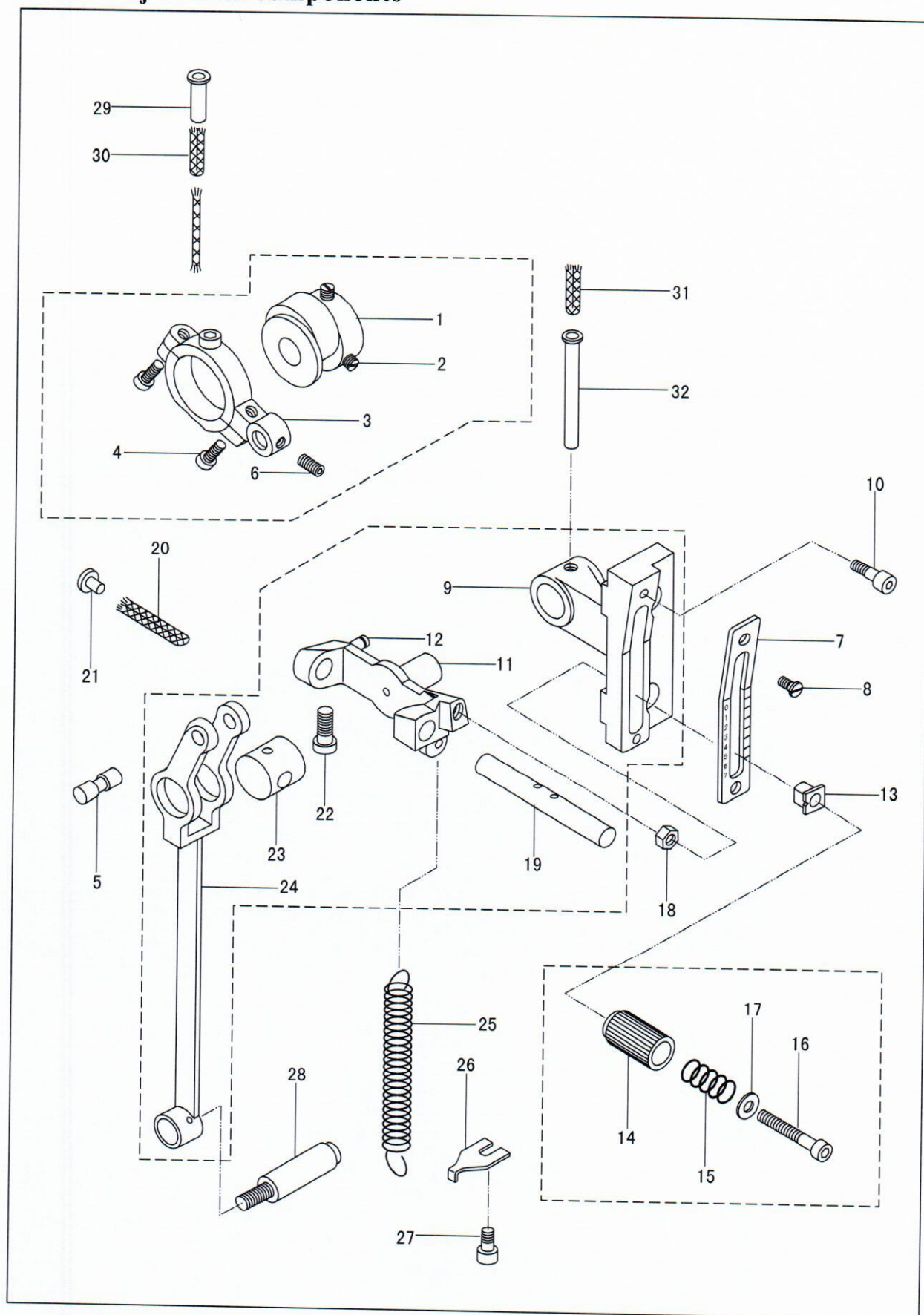
7. Rocking shaft components



7. Rocking shaft components

No.	Part Number	Name	Qt.				Remark
			P335	P335V	P335B	P335VB	
1	70201300	Rocking shaft assembly	1	1	1	1	
2	70212224	Sliding block	1	1	1	1	
3	70206297	Driving crank	1	1	1	1	
4	70215826	Screw	1	1	1	1	GB70-M8×16
5	70205390	Link	1	1	1	1	
6	70215827	Screw	1	1	1	1	SM17/64"×32
7	70215828	Nut	1	1	1	1	SM17/64"×28

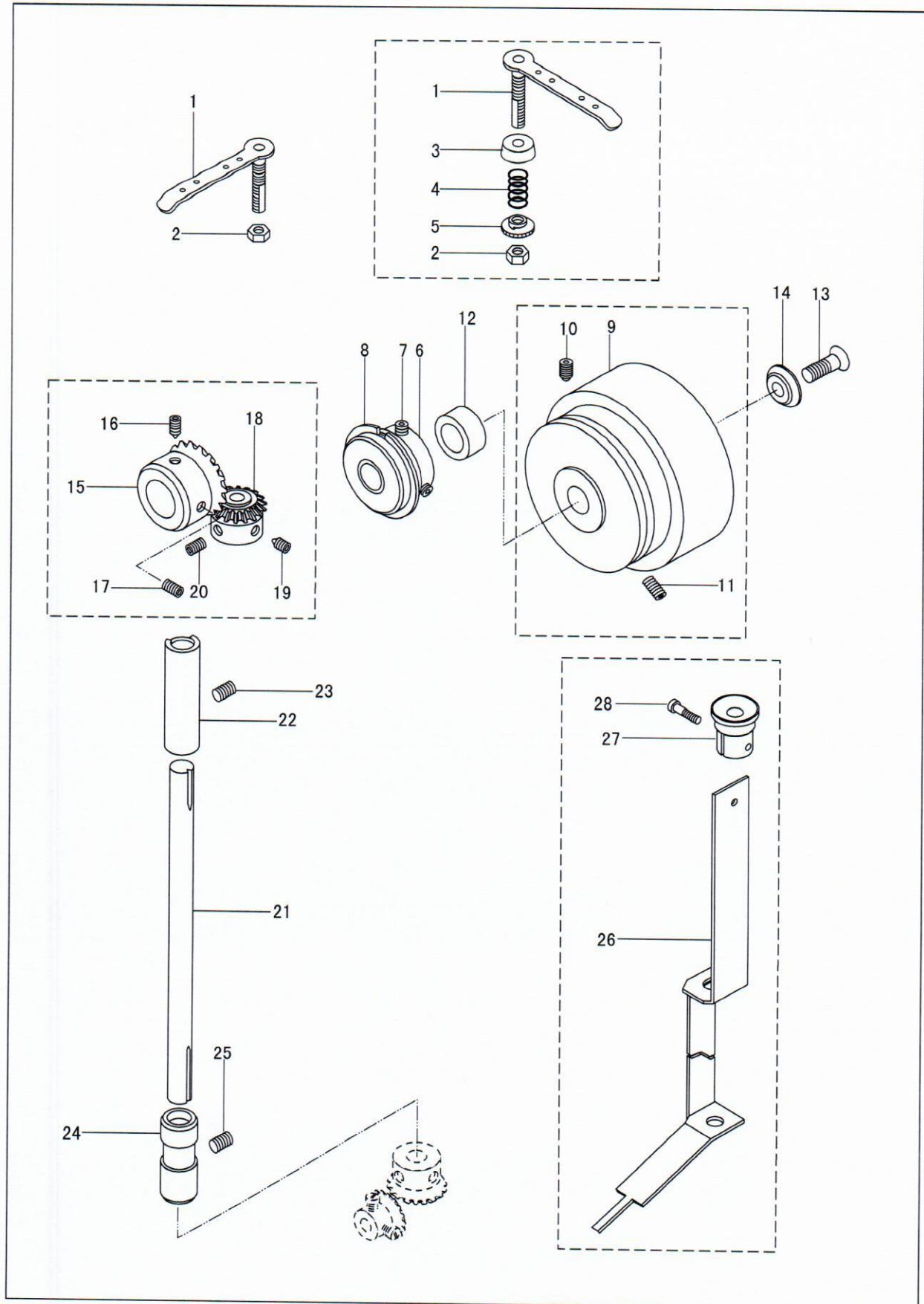
8.Feed adjustment components



8.Feed adjustment components

NO.	Part Number	Name	Qt.				Remark
			P335	P335V	P335B	P335VB	
1	70201301	Feed cam	1	1	1	1	SM1/4"×40
2	70215123	Screw	2	2	2	2	
3	7020130101	Feed crank	1	1	1	1	
4	7020130102	Screw	2	2	2	2	GB70-M5×12
5	70210396	Connecting pin	1	1	1	1	
6	7020115420	Screw	1	1	1	1	
7	70216328	Stitch length label	1	1	1	1	GB77-M4×5
8	70215829	Screw	2	2	2	2	
9	70213313	Stitch length label bracket	1	1	1	1	
10	70215048	Screw	2	2	2	2	GB70-M6×16
11	70213314	Stitch length adjusting bracket	1	1	1	1	
12		Pin	1	1	1	1	
13	70208409	Stopper bushing	1	1	1	1	GB6172-86 M6
14	70216329	Adjusting bar	1	1	1	1	
15	70217375	Spring	1	1	1	1	
16	70215830	Screw	1	1	1	1	GB70-85 M6×10
17	70218148	Spacer	1	1	1	1	
18	70215067	Nut	1	1	1	1	
19	70203362	Sliding shaft	1	1	1	1	
20		Oil wick	1	1	1	1	
21	70216327	Oil plug	1	1	1	1	
22		Screw	1	1	1	1	
23	70212225	Sliding block	1	1	1	1	
24	70205391	Link	1	1	1	1	
25	70217376	Spring	1	1	1	1	
26	70217004	Spring hook	1	1	1	1	
27	70215055	Screw	1	1	1	1	
28	70210397	Crank stud	1	1	1	1	
29	70216331	Oil tube	1	1	1	1	
30		Oil wick	1	1	1	1	
31		Oil pipe	1	1	1	1	
32	70216332	Oil wick	1	1	1	1	

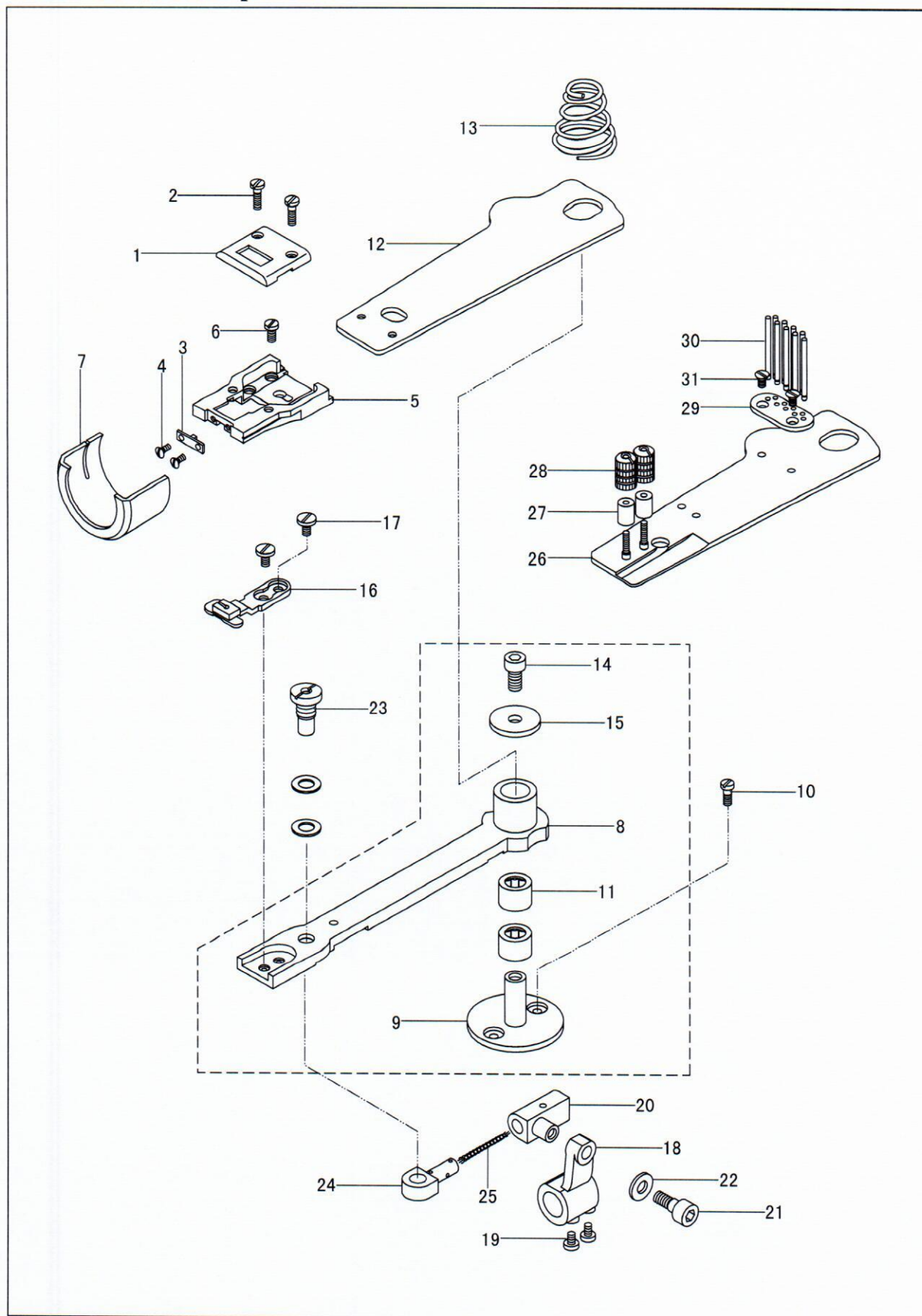
9.Vertical shaft



9. Vertical shaft

NO.	Part Number	Name	Qt.				Remark
			P335	P335V	P335B	P335VB	
1	70201302	Thread guide assembly	1	1	1	1	GB6170-M6
2	7020130201	Nut	1	1	1	1	
3	7020130202	Thread tension plate	1	1	1	1	
4	7020130203	Spring	1	1	1	1	
5	7020130204	Nut	1	1	1	1	
6	70201304	Bushing	1	1	1	1	M6×0.75
7	7020130401	Screw	2	2	2	2	
8	7020130402	Bearing	1	1	1	1	6002-2ZNR 15×32×9
9	70207211	Balance wheel	1	1	1	1	GB78-M6×0.75
10	70215050	Screw	1	1	1	1	
11	70215050	Screw	1	1	1	1	GB77-M6×0.75
12	70209094	Washer	1	1	1	1	GB68-M6×20
13	70215015	Screw	1	1	1	1	
14	70218001	Spacer	1	1	1	1	GB78-M6×0.75
15	70207212	Upper shaft gear	1	1	1	1	
16	70215051	Screw	1	1	1	1	GB77-M6×0.75
17	70215050	Screw	1	1	1	1	M6×0.75
18	70207213	Vertical shaft gear(up)	1	1	1	1	
19	70215050	Screw	1	1	1	1	M6×0.75
20	70215050	Screw	1	1	1	1	M6×0.75
21	70203363	Vertical shaft	1	1	1	1	GB77-M6×8
22	70208410	Vertical shaft bushing(up)	1	1	1	1	
23	70215057	Screw	1	1	1	1	GB77-M6×8
24	70208411	Vertical shaft bushing(low)	1	1	1	1	
25	70215057	Screw	1	1	1	1	GB818Z-M4×16
26	70216333	Oil felt	1	1	1	1	
27	70216334	Oil mouth	1	1	1	1	
28	70215831	Screw	1	1	1	1	

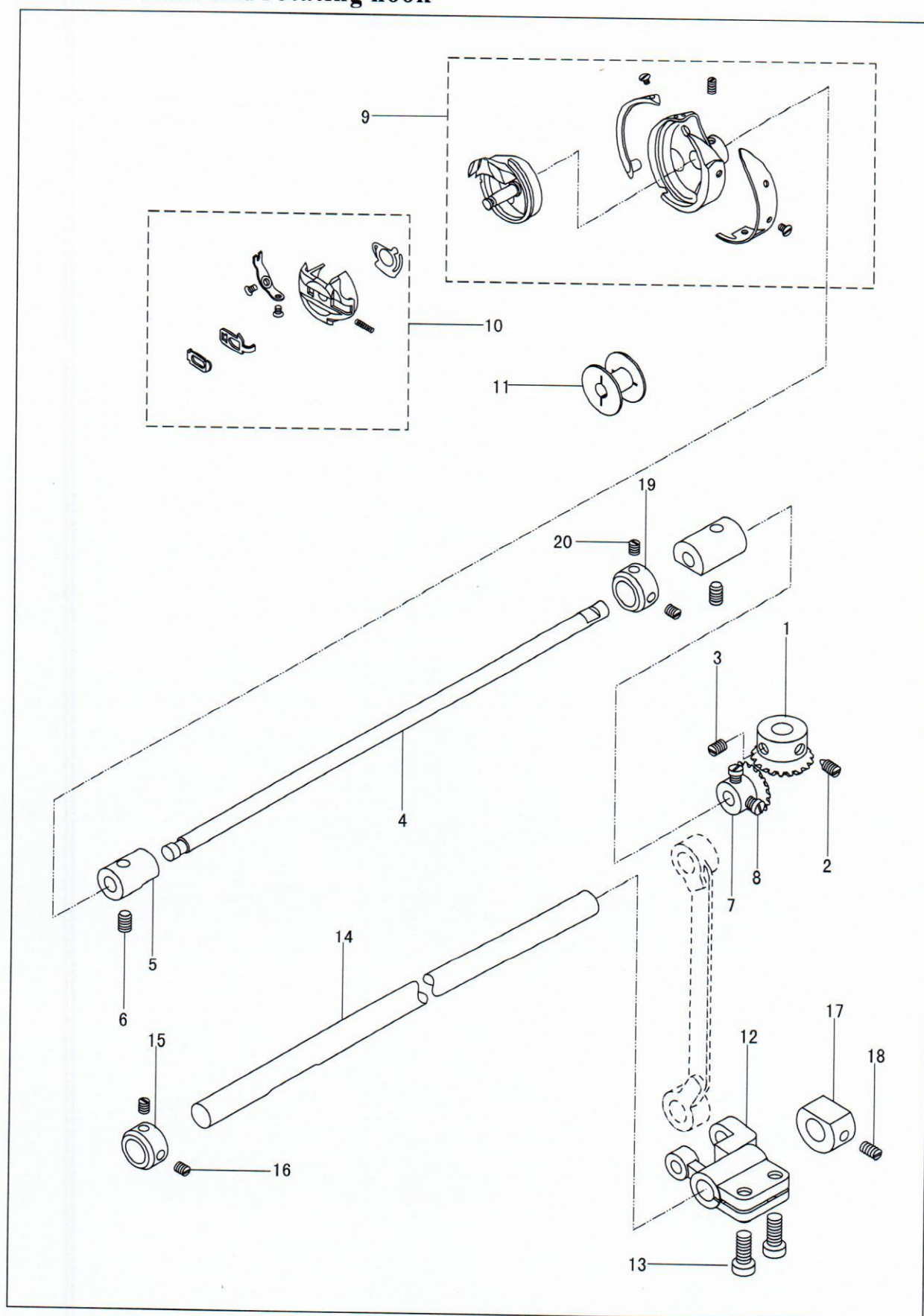
10. Lower feed components



10. Lower feed components

NO.	Part Number	Name	Qt.				Remark
			P335	P335V	P335B	P335VB	
1	70202334	Needle plate	1	/	1	/	
	70202335	Needle plate	/	1	/	1	
2	70215214	Screw	2	2	2	2	SM9/64"×40
3	70202336	Position block	1	1	1	1	
4	70215832	Screw	2	2	2	2	GB68-M2.5×3.5
5	70213315	Position block bracket	1	1	1	1	
6	70215253	Screw	4	4	4	4	SM9/64"×40
7	70213316	Cover	1	1	1	1	
8	70213317	Feed dog bracket assembly	1	1	1	1	
9	70203364	Pedestal for feed dog bracket	1	1	1	1	
10	70215017	Screw	1	1	1	1	GB65-M4×6
11	70204132	Bearing	2	2	2	2	Hk0810
12	70211421	Cover plate assembly	1	/	1	/	
13	70217377	Spring	1	1	1	1	
14	70215053	Screw	1	1	1	1	GB70-M5×10
15	70218210	Spacer	1	1	1	1	
16	70202337	Feed dog	1	/	1	/	
	70202338	Feed dog	/	1	/	1	
17	70215833	Screw	2	2	2	2	SM9/64"×40
18	70206298	driving crank	1	1	1	1	
19	70215123	Screw	2	2	2	2	SM1/4"×40
20	70212226	Connecting block	1	1	1	1	
21	70215017	Screw	1	1	1	1	GB70-M4×8
22		Spacer	1	1	1	1	
23	70210398	Pin	1	1	1	1	
24	70205392	Connector	1	1	1	1	
25		Oil felt	1	1	1	1	
26	70211422	Vibrating plate assembly	/	1	/	1	
27	70218284	Spacer	/	2	/	2	
28	70215834	Nut	/	2	/	2	
29	70211423	Tape guide base	/	1	/	1	
30		Tape guide assembly	/	9	/	9	
31	70215835	Screw	/	2	/	2	

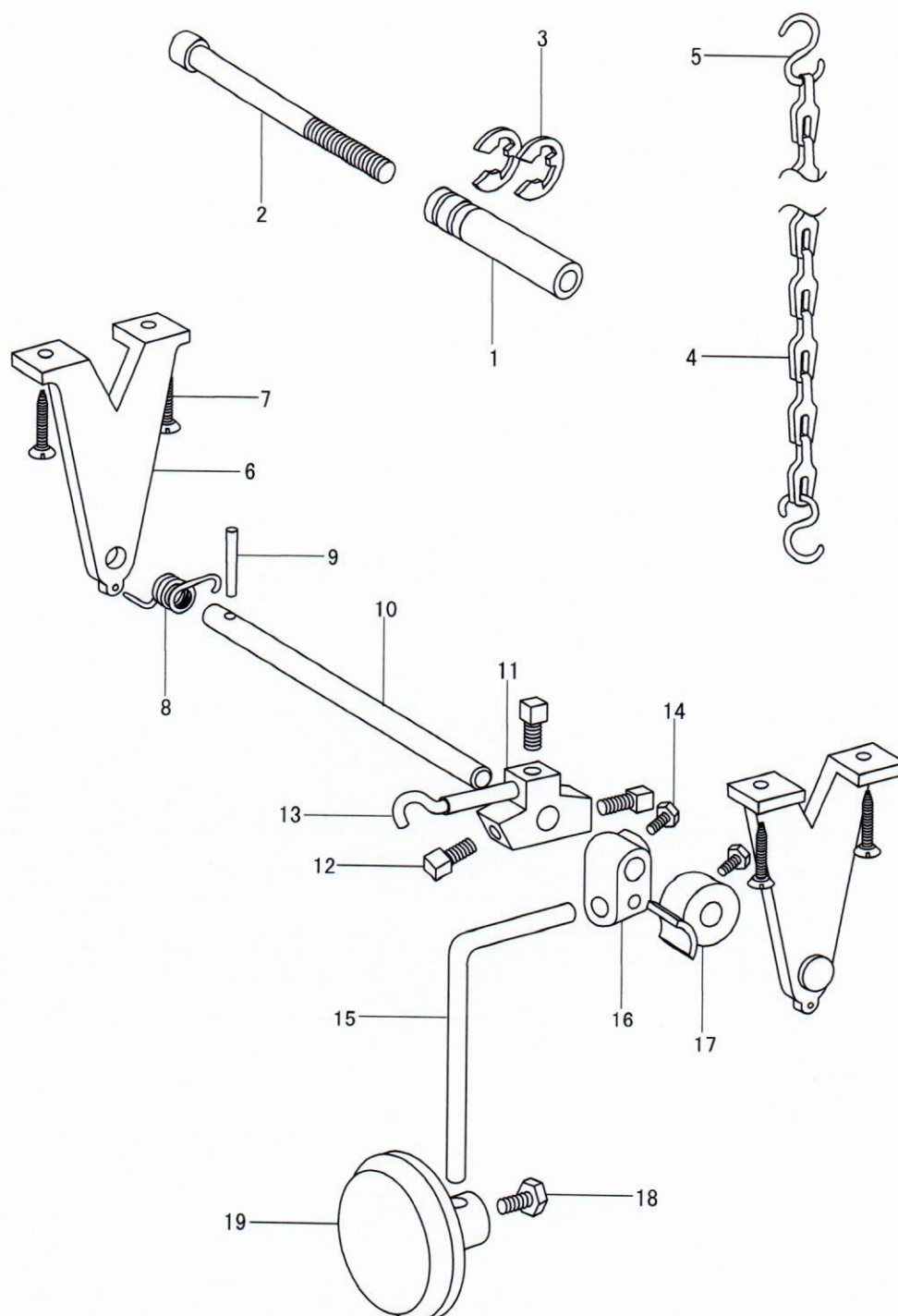
11. Lower shaft and rotating hook



11. Lower shaft and rotating hook


NO.	Part Number	Name	Qt.				Remarks
			P335	P335V	P335B	P335VB	
1	70207214	Vertical shaft gear(low)	1	1	1	1	
2	70215060	Screw	1	1	1	1	M6×0.75
3	70215060	Screw	1	1	1	1	M6×0.75
4	70203365	Vertical shaft	1	1	1	1	
5	70808412	Vertical shaft bushing	2	2	2	2	
6	70215057	Screw	2	2	2	2	GB77-M6×8
7	70207215	Vertical shaft gear	1	1	1	1	
8	70215152	Screw	2	2	2	2	SM11/64"×40
9	70202339	Hook base assembly	1	1	1	1	
10	70202340	Bobbin cape	1	1	1	1	
11	70221398	Bobbin	1	1	/	/	
	70221409	Bobbin	/	/	1	1	
12	70206299	Feed shaft crank	1	1	1	1	
13	70215426	Screw	2	2	2	2	GB65-M6×12
14	70203366	Feed shaft	1	1	1	1	
15	70209093	Collar	1	1	1	1	
16	70215836	Screw	2	2	2	2	SM11/64"×40
17	70209092	Collar	1	1	1	1	
18	70215836	Screw	1	1	1	1	SM11/64"×40
19		Collar	1	1	1	1	
20		Screw	2	2	2	2	

12.Knee lifter control components

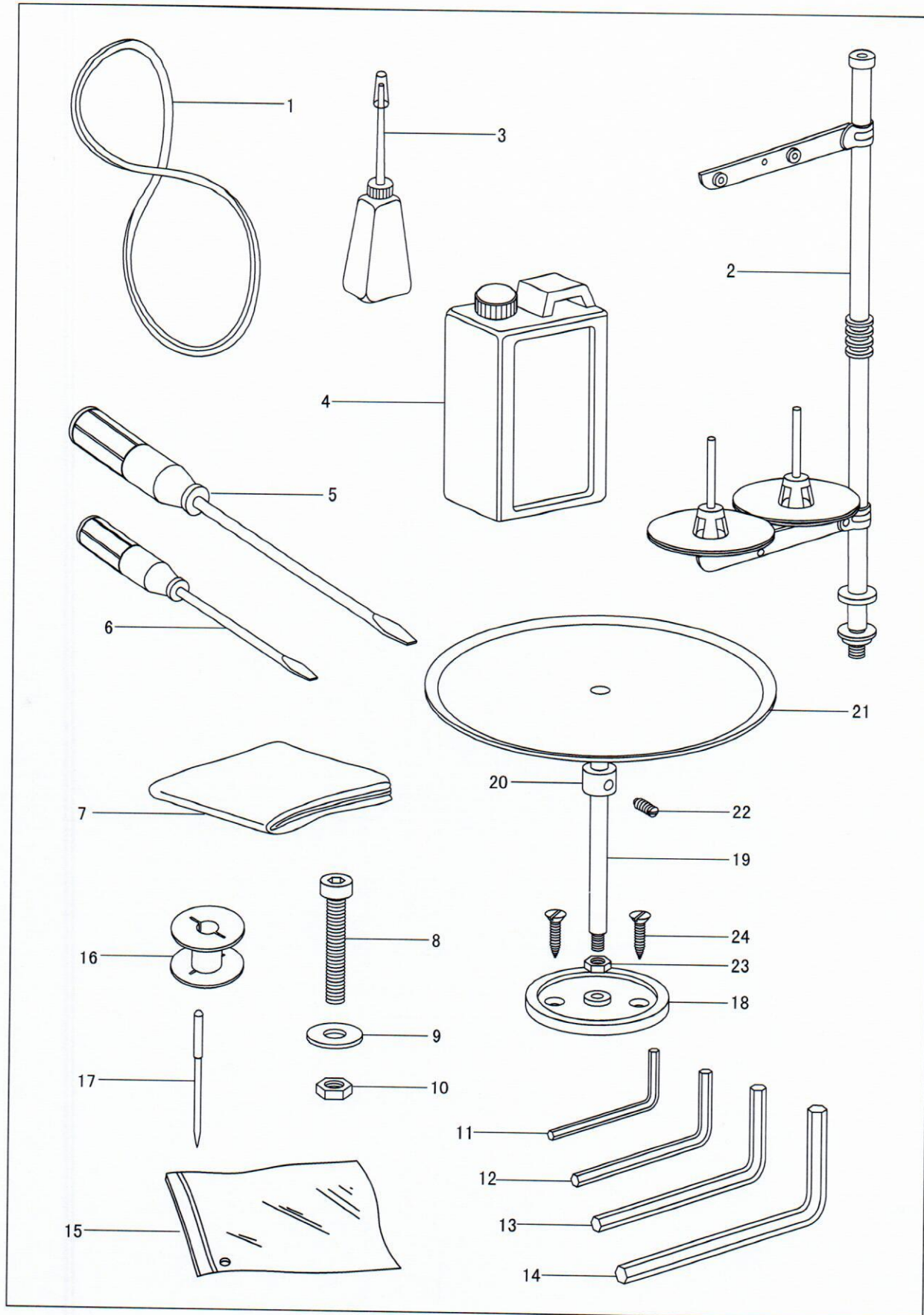


12. Knee lifter control components

NO.	Part Number	Name	Qt.				Remark
			P335	P335V	P335B	P335VB	
1	70221391	Connecting column	1	1	1	1	
2	70221392	Screw	1	1	1	1	GB70-85-M6
3	70218285	Spring	2	2	2	2	GB896-86 10
4	70221122	Chain	1	1	1	1	1000CM
5		S-type hook	2	2	2	2	
6	70221393	Support	2	2	2	2	
7		Wood screw	4	4	4	4	GB99 ST5×8
8	7022139326	Spring	1	1	1	1	
9	7022139302	Stud	1	1	1	1	GB119 31×2
10	7022139303	Bar	1	1	1	1	
11	7022139304	Crank	1	1	1	1	
12	7022139305	Screw	3	3	3	3	GB821 M8×11
13	7022139306	Hook	1	1	1	1	
14	7022139307	Screw	2	2	2	2	GB821 M8×11
15	7022139308	Knee lifter control bar	1	1	1	1	
16	7022139309	Connector	1	1	1	1	
17	7022139310	Stopper part	1	1	1	1	
18	7022139311	Screw	1	1	1	1	GB21 M6×10
19	7022139312	Knee lifter control bar assembly	1	1	1	1	


 cpl.
 7.02.21.393

13.Accessories



13. Accessories

No.	Part Number	Name	Qt.				Remark
			P335	P335V	P335B	P335VB	
1	70221394	V-belt	1	1	1	1	
2	70221050	Spool stand assembly	1	1	1	1	
3	70221028	Oil pot	1	1	1	1	
4	70221096	Oil tank	1	1	1	1	
5	70221002	Screwdriver (medium)	1	1	1	1	
6	70221001	Screwdriver (small)	1	1	1	1	
7	70221019	Cover	1	1	1	1	
8	70221395	Screw	4	4	4	4	
9	70221396	Spacer	4	4	4	4	
10	70221397	Nut	4	4	4	4	
11	70221098	Spanner	1	1	1	1	S=2.5mm
12	70221209	Spanner	1	1	1	1	S=3mm
13	70221099	Spanner	1	1	1	1	S=4mm
14	70221100	Spanner	1	1	1	1	S=5mm
15	70221020	Accessory bag	1	1	1	1	
16	70221398	Bobbin	6	6	6	6	
	70221403	Bobbin	X	X	6	6	DP×35 16#
17	70221039	Needle	3	3	3	3	
18	70221399	Tape tray base assembly	/	1	/	1	
19	70221400	Bar	/	1	/	1	
20	70221401	Collar	/	1	/	1	
21	70221402	Tape tray assembly	/	1	/	1	
22	70221403	Screw	/	1	/	1	
23	70221404	Nut	/	1	/	1	
24		Screw	/	2	/	2	